

Product datasheet for **AP14263PU-N**

Cyclin B1 (CCNB1) Rabbit Polyclonal Antibody

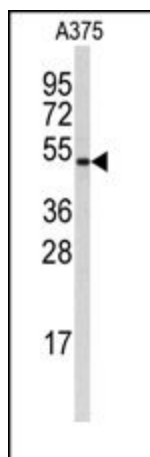
Product data:

Product Type:	Primary Antibodies
Applications:	WB
Recommended Dilution:	ELISA: 1/1,000. Western blotting: 1/50 - 1/100.
Reactivity:	Human, Mouse
Host:	Rabbit
Isotype:	Ig
Clonality:	Polyclonal
Immunogen:	This antibody is generated from rabbits immunized with a KLH conjugated synthetic peptide corresponding to amino acid residues surrounding S126 of human CCNB1.
Specificity:	This antibody reacts to Cyclin B1.
Formulation:	PBS with 0.09% (W/V) sodium azide State: Aff - Purified State: Liquid purified Ig
Concentration:	lot specific
Purification:	Protein A column, followed by peptide affinity purification
Conjugation:	Unconjugated
Storage:	Store the antibody undiluted at 2-8°C for one month or (in aliquots) at -20°C for longer. Avoid repeated freezing and thawing.
Stability:	Shelf life: one year from despatch.
Gene Name:	cyclin B1
Database Link:	Entrez Gene 891 Human P14635
Background:	Cyclin B1 is a regulatory protein involved in mitosis. It complexes with p34(cdc2) to form the maturation-promoting factor (MPF).
Synonyms:	CCNB1, CCNB, Cyclin-B1



[View online »](#)

Product images:



Western blot analysis of anti-Cyclin B1 Antibody in A375 cell line lysates (35ug/lane). Cyclin B1 (arrow) was detected using the purified Pab.