

## Product datasheet for **AP14254PU-N**

### **KREMEN1 (N-term) Rabbit Polyclonal Antibody**

#### **Product data:**

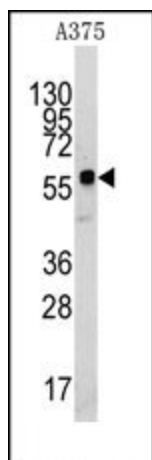
<b>Product Type:</b>	Primary Antibodies
<b>Applications:</b>	WB
<b>Recommended Dilution:</b>	ELISA: 1/1,000. Western blotting: 1/50 - 1/100.
<b>Reactivity:</b>	Human
<b>Host:</b>	Rabbit
<b>Isotype:</b>	Ig
<b>Clonality:</b>	Polyclonal
<b>Immunogen:</b>	This antibody is generated from rabbits immunized with a KLH conjugated synthetic peptide selected from the N-terminal region of human KREMEN1.
<b>Specificity:</b>	This antibody reacts to KREMEN1.
<b>Formulation:</b>	PBS with 0.09% (W/V) sodium azide State: Purified State: Liquid purified Ig
<b>Concentration:</b>	lot specific
<b>Purification:</b>	Prepared by Saturated Ammonium Sulfate (SAS) precipitation followed by dialysis against PBS
<b>Conjugation:</b>	Unconjugated
<b>Storage:</b>	Store the antibody undiluted at 2-8°C for one month or (in aliquots) at -20°C for longer. Avoid repeated freezing and thawing.
<b>Stability:</b>	Shelf life: one year from despatch.
<b>Gene Name:</b>	kringle containing transmembrane protein 1
<b>Database Link:</b>	<a href="#">Entrez Gene 83999 Human</a> <a href="#">Q96MU8</a>
<b>Background:</b>	KREMEN1 is a high-affinity dickkopf homolog 1 (DKK1) transmembrane receptor that functionally cooperates with DKK1 to block wntless (WNT)/beta-catenin signaling. This protein is a component of a membrane complex that modulates canonical WNT signaling through lipoprotein receptor-related protein 6 (LRP6). It contains extracellular kringle, WSC, and CUB domains.



[View online »](#)

Synonyms: KREMEN1, KREMEN, KRM1, Dickkopf receptor

**Product images:**



Western blot analysis of anti-KREMEN1 Antibody (N-term) in A375 cell line lysates (35ug/lane).KREMEN1 (arrow) was detected using the purified Pab (1:60dilution).