

Product datasheet for **AP14250PU-N**

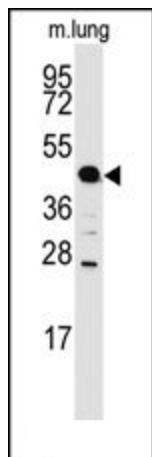
Prostatic Acid Phosphatase (ACPP) (C-term) Rabbit Polyclonal Antibody

Product data:

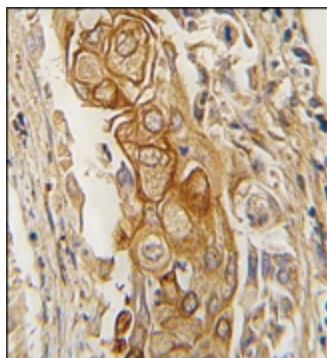
Product Type:	Primary Antibodies
Applications:	IHC, WB
Recommended Dilution:	ELISA: 1/1,000. Western blotting: 1/50 - 1/100. Immunohistochemistry: 1/10 - 1/50.
Reactivity:	Human
Host:	Rabbit
Isotype:	Ig
Clonality:	Polyclonal
Immunogen:	This antibody is generated from rabbits immunized with a KLH conjugated synthetic peptide selected from the C-terminal region of human ACPP.
Specificity:	This antibody reacts to ACPP.
Formulation:	PBS with 0.09% (W/V) sodium azide State: Purified State: Liquid purified Ig
Concentration:	lot specific
Purification:	Prepared by Saturated Ammonium Sulfate (SAS) precipitation followed by dialysis against PBS
Conjugation:	Unconjugated
Storage:	Store the antibody undiluted at 2-8°C for one month or (in aliquots) at -20°C for longer. Avoid repeated freezing and thawing.
Stability:	Shelf life: one year from despatch.
Gene Name:	acid phosphatase, prostate
Database Link:	Entrez Gene 55 Human P15309
Background:	ACPP is an enzyme which catalyzes the conversion of orthophosphoric monoester to alcohol and orthophosphate. It is synthesized under androgen regulation and is secreted by the epithelial cells of the prostate gland.
Synonyms:	Prostate acid phosphatase, PAP, ACP3, PSAP



[View online »](#)

Product images:

Western blot analysis of anti-ACPP Antibody (C-term) in mouse lung tissue lysates (35ug/lane). ACPP (arrow) was detected using the purified Pab (1:60 dilution).



Formalin-fixed and paraffin-embedded human lung carcinoma tissue reacted with ACPP antibody (C-term), which was peroxidase-conjugated to the secondary antibody, followed by DAB staining.