

## Product datasheet for **AP14246PU-N**

### CLIC1 Rabbit Polyclonal Antibody

#### Product data:

Product Type:	Primary Antibodies
Applications:	IHC, WB
Recommended Dilution:	ELISA: 1/1,000. Western blotting: 1/50 - 1/100. Immunohistochemistry: 1/10 - 1/50.
Reactivity:	Human
Host:	Rabbit
Isotype:	Ig
Clonality:	Polyclonal
Immunogen:	This antibody is generated from rabbits immunized with a recombinant human CLIC1 protein.
Specificity:	This antibody reacts to CLIC1.
Formulation:	PBS with 0.09% (W/V) sodium azide State: Purified State: Liquid purified Ig
Concentration:	lot specific
Purification:	Prepared by Saturated Ammonium Sulfate (SAS) precipitation followed by dialysis against PBS
Conjugation:	Unconjugated
Storage:	Store the antibody undiluted at 2-8°C for one month or (in aliquots) at -20°C for longer. Avoid repeated freezing and thawing.
Stability:	Shelf life: one year from despatch.
Gene Name:	chloride intracellular channel 1
Database Link:	<a href="#">Entrez Gene 1192 Human</a> <a href="#">O00299</a>



[View online »](#)

**Background:**

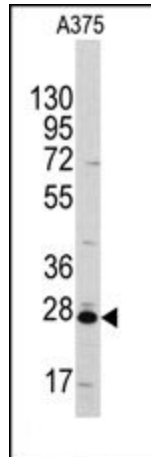
Chloride channels are a diverse group of proteins that regulate fundamental cellular processes including stabilization of cell membrane potential, transepithelial transport, maintenance of intracellular pH, and regulation of cell volume. Chloride intracellular channel 1 is a member of the p64 family; the protein localizes principally to the cell nucleus and exhibits both nuclear and plasma membrane chloride ion channel activity.

**Synonyms:**

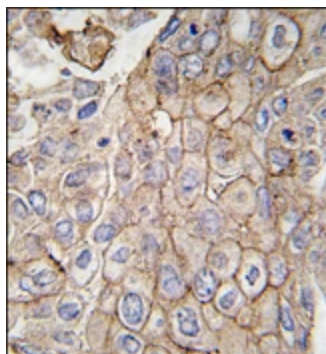
NCC27, Chloride channel ABP, hRNCC

**Protein Families:**

Druggable Genome, Ion Channels: Other

**Product images:**

Western blot analysis of anti-CLIC1 Antibody in A375 cell line lysates (35ug/lane). CLIC1 (arrow) was detected using the purified Pab (1:60dilution).



Formalin-fixed and paraffin-embedded human lung carcinoma tissue reacted with CLIC1 antibody, which was peroxidase-conjugated to the secondary antibody, followed by DAB staining.