

Product datasheet for **AP14245PU-N**

CABP (CABP1) (C-term) Rabbit Polyclonal Antibody

Product data:

Product Type:	Primary Antibodies
Applications:	IHC, WB
Recommended Dilution:	ELISA: 1/1,000. Western blotting: 1/50 - 1/100. Immunohistochemistry: 1/10 - 1/50.
Reactivity:	Human
Host:	Rabbit
Isotype:	Ig
Clonality:	Polyclonal
Immunogen:	This antibody is generated from rabbits immunized with a KLH conjugated synthetic peptide selected from the C-terminal region of human CABP1.
Specificity:	This antibody reacts to CABP1.
Formulation:	PBS with 0.09% (W/V) sodium azide State: Purified State: Liquid purified Ig
Concentration:	lot specific
Purification:	Prepared by Saturated Ammonium Sulfate (SAS) precipitation followed by dialysis against PBS
Conjugation:	Unconjugated
Storage:	Store the antibody undiluted at 2-8°C for one month or (in aliquots) at -20°C for longer. Avoid repeated freezing and thawing.
Stability:	Shelf life: one year from despatch.
Gene Name:	calcium binding protein 1
Database Link:	Entrez Gene 9478 Human Q9NZU7



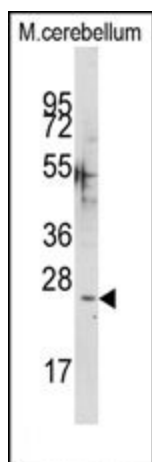
[View online »](#)

Background:

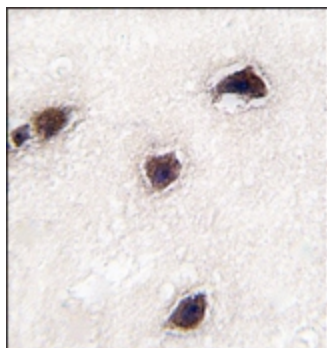
CABP1 belongs to a subfamily of calcium binding proteins, which share similarity to calmodulin. Calcium binding proteins are an important component of calcium mediated cellular signal transduction. Expression of this protein was only detected in retina and brain. Study of the mouse homolog demonstrated that groups of cells expressing this protein are located in the center or inner border of the inner unclar layer of retina.

Synonyms:

Calcium-binding protein 1, Calbrain

Product images:

Western blot analysis of anti-CABP1 Antibody (C-term) in mouse cerebellum tissue lysates (35ug/lane). CABP1 (arrow) was detected using the purified Pab (1:60 dilution).



Formalin-fixed and paraffin-embedded human brain tissue reacted with CABP1 antibody (C-term), which was peroxidase-conjugated to the secondary antibody, followed by DAB staining.