

## Product datasheet for **AP14238PU-N**

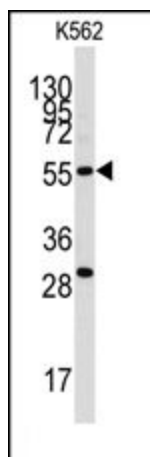
### CLIC5 Rabbit Polyclonal Antibody

#### Product data:

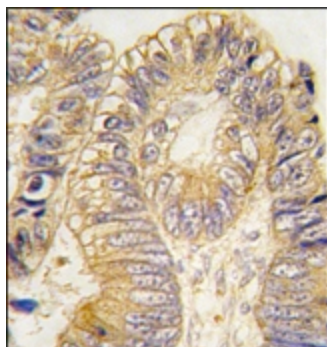
Product Type:	Primary Antibodies
Applications:	IHC, WB
Recommended Dilution:	ELISA: 1/1,000. Western blotting: 1/50 - 1/100. Immunohistochemistry: 1/10 - 1/50.
Reactivity:	Human
Host:	Rabbit
Isotype:	Ig
Clonality:	Polyclonal
Immunogen:	This antibody is generated from rabbits immunized with human recombinant CLIC5 protein.
Specificity:	This antibody reacts to CLIC5.
Formulation:	PBS with 0.09% (W/V) sodium azide State: Purified State: Liquid purified Ig
Concentration:	lot specific
Purification:	Prepared by Saturated Ammonium Sulfate (SAS) precipitation followed by dialysis against PBS
Conjugation:	Unconjugated
Storage:	Store the antibody undiluted at 2-8°C for one month or (in aliquots) at -20°C for longer. Avoid repeated freezing and thawing.
Stability:	Shelf life: one year from despatch.
Gene Name:	chloride intracellular channel 5
Database Link:	<a href="#">Entrez Gene 53405 Human Q9NZA1</a>
Background:	Chloride intracellular channels are involved in chloride ion transport within various subcellular compartments. CLIC5 specifically associates with the cytoskeleton of placenta microvilli.
Synonyms:	Chloride intracellular channel protein 5



[View online »](#)

**Product images:**

Western blot analysis of anti-CLIC5 Antibody in K562 cell line lysates (35ug/lane). CLIC5 (arrow) was detected using the purified Pab (1:60dilution).



Formalin-fixed and paraffin-embedded human colon carcinoma tissue reacted with CLIC5 antibody, which was peroxidase-conjugated to the secondary antibody, followed by DAB staining.