

## Product datasheet for **AP14237PU-N**

### CLOCK (Center) Rabbit Polyclonal Antibody

#### Product data:

Product Type:	Primary Antibodies
Applications:	IHC
Recommended Dilution:	ELISA: 1/1,000. Immunohistochemistry: 1/10 - 1/50.
Reactivity:	Human
Host:	Rabbit
Isotype:	Ig
Clonality:	Polyclonal
Immunogen:	This antibody is generated from rabbits immunized with a KLH conjugated synthetic peptide selected from the Center region of human CLOCK.
Specificity:	This antibody reacts to CLOCK.
Formulation:	PBS with 0.09% (W/V) sodium azide State: Purified State: Liquid purified Ig
Concentration:	lot specific
Purification:	Prepared by Saturated Ammonium Sulfate (SAS) precipitation followed by dialysis against PBS.
Conjugation:	Unconjugated
Storage:	Store the antibody undiluted at 2-8°C for one month or (in aliquots) at -20°C for longer. Avoid repeated freezing and thawing.
Stability:	Shelf life: one year from despatch.
Gene Name:	clock circadian regulator
Database Link:	<a href="#">Entrez Gene 9575 Human O15516</a>



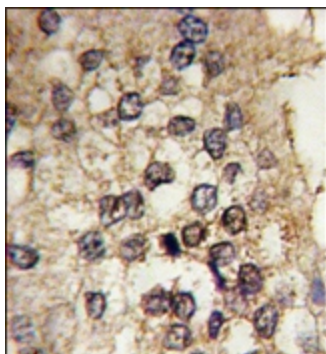
[View online »](#)

**Background:**

CLOCK belongs to the basic helix-loop-helix (bHLH) family of transcription factors. Polymorphisms within this protein have been associated with circadian rhythm sleep disorders. A similar protein in mice is a circadian regulator that acts as a transcription factor and forms a heterodimer with aryl hydrocarbon receptor nuclear translocator-like to activate transcription of mouse period 1.

**Synonyms:**

KIAA0334, BHLHE8

**Product images:**

Formalin-fixed and paraffin-embedded human prostate carcinoma tissue reacted with CLOCK antibody (Center), which was peroxidase-conjugated to the secondary antibody, followed by DAB staining.