

Product datasheet for **AP14229PU-N**

Cullin 5 (CUL5) (C-term) Rabbit Polyclonal Antibody

Product data:

Product Type:	Primary Antibodies
Applications:	WB
Recommended Dilution:	ELISA: 1/1,000. Western Blot: 1/50-1/100.
Reactivity:	Human
Host:	Rabbit
Isotype:	Ig
Clonality:	Polyclonal
Immunogen:	This antibody is generated from rabbits immunized with a KLH conjugated synthetic peptide selected from the C-terminal region of human CUL5.
Specificity:	This antibody reacts with CUL5 (C-term).
Formulation:	PBS with 0.09% (W/V) Sodium Azide as preservative. State: Purified State: Liquid purified Ig fraction.
Concentration:	lot specific
Purification:	Saturated Ammonium Sulfate (SAS) precipitation followed by dialysis against PBS.
Conjugation:	Unconjugated
Storage:	Store the antibody undiluted at 2-8°C for one month or (in aliquots) at -20°C for longer. Avoid repeated freezing and thawing.
Stability:	Shelf life: one year from despatch.
Gene Name:	cullin 5
Database Link:	Entrez Gene 8065 Human Q93034



[View online »](#)

Background:

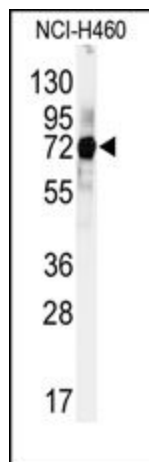
CUL5 is a core component of multiple SCF-like ECS (Elongin-Cullin 2/5-SOCS-box protein) E3 ubiquitin-protein ligase complexes, which mediate the ubiquitination and subsequent proteasomal degradation of target proteins. As a scaffold protein may contribute to catalysis through positioning of the substrate and the ubiquitin-conjugating enzyme. The functional specificity of the E3 ubiquitin-protein ligase complex depends on the variable substrate recognition component. ECS(SOCS1) seems to direct ubiquitination of JAK2. It seems to be involved proteasomal degradation of p53/TP53 stimulated by adenovirus E1B-55 kDa protein and may form a cell surface vasopressin receptor.

Synonyms:

CUL-5, CUL5, VACM1, VACM-1

Note:

Molecular weight: 90955 Da predicted from amino acid sequence.
Theoretical pI: 8.08

Product images:

Western blot analysis of anti-CUL5 Antibody (C-term) in HeLa cell line lysates (35ug/lane). CUL5 (arrow) was detected using the purified Pab.