

## Product datasheet for **AP14221PU-N**

### Aromatase (CYP19A1) (C-term) Rabbit Polyclonal Antibody

#### Product data:

Product Type:	Primary Antibodies
Applications:	IHC, WB
Recommended Dilution:	Western blot: 1/1000. Immunohistochemistry on Paraffin Sections: 1/10-1/50.
Reactivity:	Human
Host:	Rabbit
Isotype:	Ig
Clonality:	Polyclonal
Immunogen:	KLH conjugated synthetic peptide between 453~485 amino acids from the C-terminal region of Human CYP19A1.
Specificity:	This antibody detects Aromatase (CYP19A1) at C-term.
Formulation:	PBS with 0.09% (W/V) Sodium Azide as preservative State: Purified State: Liquid purified Ig fraction
Concentration:	lot specific
Purification:	Prepared by Saturated Ammonium Sulfate (SAS) precipitation followed by dialysis against PBS
Conjugation:	Unconjugated
Storage:	Store the antibody undiluted at 2-8°C for one month or (in aliquots) at -20°C for longer. Avoid repeated freezing and thawing.
Stability:	Shelf life: one year from despatch.
Gene Name:	cytochrome P450 family 19 subfamily A member 1
Database Link:	<a href="#">Entrez Gene 1588 Human P11511</a>



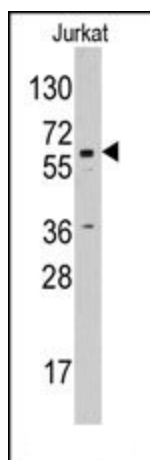
[View online »](#)

**Background:** CYP19A1 is a member of the cytochrome P450 superfamily of enzymes. The cytochrome P450 proteins are monooxygenases which catalyze many reactions involved in drug metabolism and synthesis of cholesterol, steroids and other lipids. This protein localizes to the endoplasmic reticulum and catalyzes the last steps of estrogen biosynthesis, three successive hydroxylations of the A ring of androgens. Mutations in the gene encoding CYP19A1 can result in either increased or decreased aromatase activity; the associated phenotypes suggest that estrogen functions both as a sex steroid hormone and in growth or differentiation.

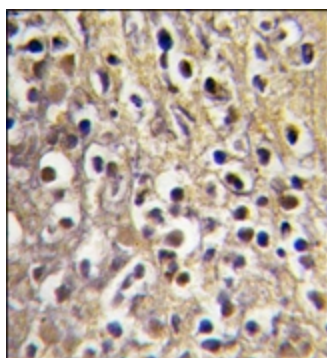
**Synonyms:** Cytochrome P450 19A1, CYPXIX, Estrogen synthetase, P450AROM, CYP19A1, ARO1, CYAR, CYP19

**Note:** Calculated Molecular Weight: 57883 Da

### Product images:



Western blot analysis using CYP19A1 antibody in Jurkat cell line lysates (35 ug/lane). CYP19A1 (arrow) was detected using the purified antibody at 1/60 dilution.



CYP19A1 antibody staining of Formalin-Fixed, Paraffin-Embedded Human placenta tissue using peroxidase-conjugate and DAB chromogen.