

## Product datasheet for **AP14208PU-N**

### Caspase 3 (CASP3) Rabbit Polyclonal Antibody

#### Product data:

Product Type:	Primary Antibodies
Applications:	IHC, WB
Recommended Dilution:	ELISA: 1/1,000. Western blotting: 1/50 - 1/100. Immunohistochemistry: 1/10 - 1/50.
Reactivity:	Human
Host:	Rabbit
Isotype:	Ig
Clonality:	Polyclonal
Immunogen:	This antibody is generated from rabbits immunized with a KLH conjugated synthetic peptide selected from the Center region of human CASP3.
Specificity:	This antibody reacts to Caspase-3 (CASP3).
Formulation:	PBS with 0.09% (W/V) sodium azide State: Purified State: Liquid purified Ig
Concentration:	lot specific
Purification:	Prepared by Saturated Ammonium Sulfate (SAS) precipitation followed by dialysis against PBS
Conjugation:	Unconjugated
Storage:	Store the antibody undiluted at 2-8°C for one month or (in aliquots) at -20°C for longer. Avoid repeated freezing and thawing.
Stability:	Shelf life: one year from despatch.
Gene Name:	caspase 3
Database Link:	<a href="#">Entrez Gene 836 Human P42574</a>



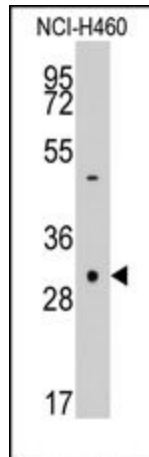
[View online »](#)

**Background:**

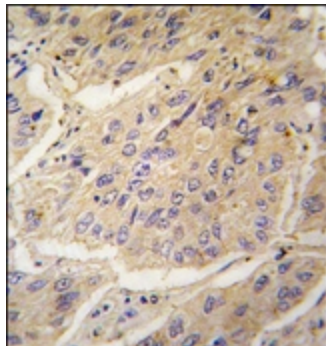
CASP3 is a member of the cysteine-aspartic acid protease (caspase) family. Sequential activation of caspases plays a central role in the execution-phase of cell apoptosis. Caspases exist as inactive proenzymes which undergo proteolytic processing at conserved aspartic residues to produce two subunits, large and small, that dimerize to form the active enzyme. This protein cleaves and activates caspases 6, 7 and 9, and the protein itself is processed by caspases 8, 9 and 10. It is the predominant caspase involved in the cleavage of amyloid-beta 4A precursor protein, which is associated with neuronal death in Alzheimer's disease.

**Synonyms:**

CASP-3, CASP3, CPP32, CPP-32, Yama protein, Apopain, SCA-1, SCA1

**Product images:**

Western blot analysis of anti-CASP3 Pab in NCI-H460 cell line lysates (35ug/lane). CASP3 (arrow) was detected using the purified Pab (1:60 dilution).



Formalin-fixed and paraffin-embedded human lung carcinoma tissue reacted with CASP3 antibody (Center), which was peroxidase-conjugated to the secondary antibody, followed by DAB staining.