

Product datasheet for **AP14196PU-N**

DYRK1A (Center) Rabbit Polyclonal Antibody

Product data:

Product Type:	Primary Antibodies
Applications:	WB
Recommended Dilution:	ELISA: 1/1,000 . Western blotting: 1/50 - 1/100.
Reactivity:	Human
Host:	Rabbit
Isotype:	Ig
Clonality:	Polyclonal
Immunogen:	This antibody is generated from rabbits immunized with a KLH conjugated synthetic peptide selected from the center region of human DYRK1A.
Specificity:	This antibody reacts to DYRK1A.
Formulation:	PBS with 0.09% (W/V) sodium azide State: Purified State: Liquid purified Ig
Concentration:	lot specific
Purification:	Protein A column, eluted with high and low pH buffers and neutralized immediately, followed by dialysis against PBS
Conjugation:	Unconjugated
Storage:	Store the antibody undiluted at 2-8°C for one month or (in aliquots) at -20°C for longer. Avoid repeated freezing and thawing.
Stability:	Shelf life: one year from despatch.
Gene Name:	dual specificity tyrosine phosphorylation regulated kinase 1A
Database Link:	Entrez Gene 1859 Human Q13627



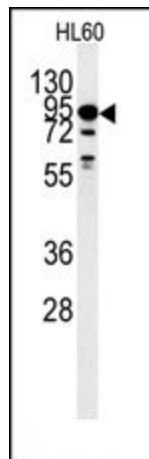
[View online »](#)

Background:

DYRK1A is a member of the Dual-specificity tyrosine phosphorylation-regulated kinase (DYRK) family. This member contains a nuclear targeting signal sequence, a protein kinase domain, a leucine zipper motif, and a highly conservative 13-consecutive-histidine repeat. It catalyzes its autophosphorylation on serine/threonine and tyrosine residues. It may play a significant role in a signaling pathway regulating cell proliferation and may be involved in brain development. This gene is a homolog of *Drosophila* *mnb* (minibrain) gene and rat *Dyrk* gene. It is localized in the Down syndrome critical region of chromosome 21, and is considered to be a strong candidate gene for learning defects associated with Down syndrome.

Synonyms:

DYRK, MNB, MNBH, Protein kinase minibrain homolog, HP86, Dual specificity YAK1-related kinase

Product images:

Western blot analysis of DYRK1A Antibody (Center) polyclonal antibody in HL60 cell line lysates (35ug/lane). DYRK1A (arrow) was detected using the purified Pab (1:60 dilution).