

## Product datasheet for **AP14186PU-N**

### **PCTAIRE2 (CDK17) (N-term) Rabbit Polyclonal Antibody**

#### **Product data:**

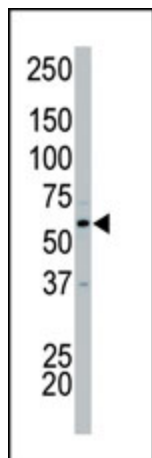
<b>Product Type:</b>	Primary Antibodies
<b>Applications:</b>	IHC, WB
<b>Recommended Dilution:</b>	ELISA: 1/1,000. Western blotting: 1/100 - 1/500. Immunohistochemistry: 1/50 - 1/100.
<b>Reactivity:</b>	Human
<b>Host:</b>	Rabbit
<b>Isotype:</b>	Ig
<b>Clonality:</b>	Polyclonal
<b>Immunogen:</b>	This antibody is generated from rabbits immunized with a KLH conjugated synthetic peptide selected from the N-terminal region of human PCK2.
<b>Specificity:</b>	This antibody reacts to PCTAIRE2 (PCK2).
<b>Formulation:</b>	PBS with 0.09% (W/V) sodium azide State: Purified State: Liquid purified Ig
<b>Concentration:</b>	lot specific
<b>Purification:</b>	Protein G column, eluted with high and low pH buffers and neutralized immediately, followed by dialysis against PBS
<b>Conjugation:</b>	Unconjugated
<b>Storage:</b>	Store the antibody undiluted at 2-8°C for one month or (in aliquots) at -20°C for longer. Avoid repeated freezing and thawing.
<b>Stability:</b>	Shelf life: one year from despatch.
<b>Gene Name:</b>	cyclin-dependent kinase 17
<b>Database Link:</b>	<a href="#">Entrez Gene 5128 Human Q00537</a>
<b>Background:</b>	The protein encoded by this gene belongs to the cdc2/cdkx subfamily of the ser/thr family of protein kinases. It has similarity to rat protein which is thought to play a role in terminally differentiated neurons.



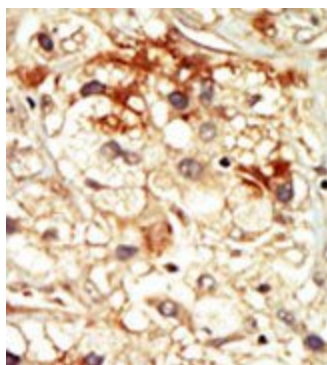
[View online »](#)

Synonyms: PCTAIRE-2, PCTAIRE 2, PCTAIRE2, PCTAIRE-motif protein kinase 2

### Product images:



The anti-PCTK2 Pab is used in Western blot to detect PCTK2 in HeLa cell lysate.



Formalin-fixed and paraffin-embedded human cancer tissue reacted with the primary antibody, which was peroxidase-conjugated to the secondary antibody, followed by DAB staining.