

Product datasheet for **AP14175PU-N**

HIPK2 Rabbit Polyclonal Antibody

Product data:

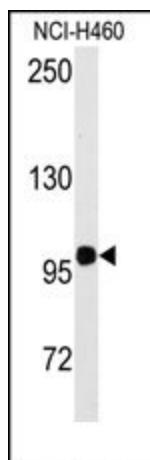
Product Type:	Primary Antibodies
Applications:	WB
Recommended Dilution:	ELISA: 1/1,000. Western blotting: 1/50 - 1/100.
Reactivity:	Human
Host:	Rabbit
Isotype:	Ig
Clonality:	Polyclonal
Immunogen:	KLH conjugated synthetic peptide corresponding to amino acid residues surrounding Y361 of human HIPK2.
Specificity:	This antibody reacts to HIPK2.
Formulation:	PBS with 0.09% (W/V) sodium azide State: Aff - Purified State: Liquid purified Ig
Concentration:	lot specific
Purification:	Affinity chromatography on Protein A
Conjugation:	Unconjugated
Storage:	Store the antibody undiluted at 2-8°C for one month or (in aliquots) at -20°C for longer. Avoid repeated freezing and thawing.
Stability:	Shelf life: one year from despatch.
Gene Name:	homeodomain interacting protein kinase 2
Database Link:	Entrez Gene 28996 Human Q9H2X6
Background:	HIPK2, a member of the KIPK subfamily of Ser/Thr protein kinases, phosphorylates homeodomain transcription factors. It may play a role as a corepressor for homeodomain transcription factors. This nuclear protein has been shown to interact with TRADD. It is highly expressed in neuronal tissues, heart and kidney, and weakly expressed in a ubiquitous way. HIPK2 is a target for sumoylation, and when conjugated it is directed to nuclear speckles



[View online »](#)

Synonyms: DKFZp686K02111; FLJ23711; hHIPk2; PRO0593

Product images:



Western blot analysis of anti-HIPK2 Antibody in NCI-H460 cell line lysates (35ug/lane). HIPK2 (arrow) was detected using the purified Pab.