

Product datasheet for **AP14130PU-N**

SAPK3 (MAPK12) (C-term) Rabbit Polyclonal Antibody

Product data:

Product Type:	Primary Antibodies
Applications:	IHC, WB
Recommended Dilution:	ELISA: 1/1,000. Western blotting: 1/100 - 1/500. Immunohistochemistry: 1/10 - 1/50.
Reactivity:	Human, Mouse
Host:	Rabbit
Isotype:	Ig
Clonality:	Polyclonal
Immunogen:	This antibody is generated from rabbits immunized with a KLH conjugated synthetic peptide selected from the C-terminal region of human P38 gamma.
Specificity:	This antibody reacts to p38 gamma (MAPK12).
Formulation:	PBS with 0.09% (W/V) sodium azide State: Purified State: Liquid purified Ig
Concentration:	lot specific
Purification:	Protein G column, eluted with high and low pH buffers and neutralized immediately, followed by dialysis against PBS
Conjugation:	Unconjugated
Storage:	Store the antibody undiluted at 2-8°C for one month or (in aliquots) at -20°C for longer. Avoid repeated freezing and thawing.
Stability:	Shelf life: one year from despatch.
Gene Name:	mitogen-activated protein kinase 12
Database Link:	Entrez Gene 6300 Human P53778



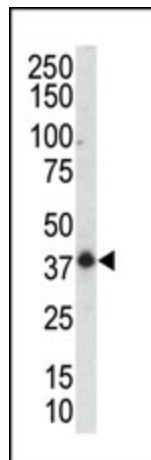
[View online »](#)

Background:

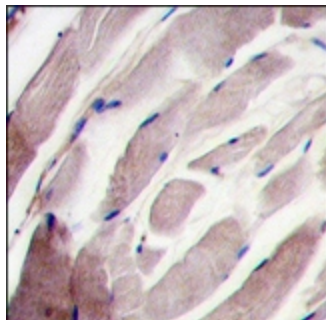
P38 gamma is a member of the MAP kinase family. MAP kinases act as an integration point for multiple biochemical signals, and are involved in a wide variety of cellular processes such as proliferation, differentiation, transcription regulation and development. Activation of members of the mitogen-activated protein kinase family is a major mechanism for transduction of extracellular signals. Stress-activated protein kinases are one subclass of MAP kinases. P38 gamma functions as a signal transducer during differentiation of myoblasts to myotubes.

Synonyms:

Mitogen-activated protein kinase 12, ERK5, Stress-activated protein kinase 3, p38 gamma, ERK6, SAPK3, MAP kinase p38 gamma

Product images:

Western blot analysis of anti-P38gamma C-term Pab in mouse muscle tissue lysate. P38gamma (arrow) was detected using purified Pab. Secondary HRP-anti-rabbit was used for signal visualization with chemiluminescence.



Formalin-fixed and paraffin-embedded human skeletal muscle tissue reacted with the P38 gamma antibody (C-term), which was peroxidase-conjugated to the secondary antibody, followed by DAB staining.