

## Product datasheet for **AP14118PU-N**

### ERK5 (MAPK7) (C-term) Rabbit Polyclonal Antibody

#### Product data:

Product Type:	Primary Antibodies
Applications:	IHC, WB
Recommended Dilution:	ELISA: 1/1,000. Western blotting: 1/100 - 1/500. Immunohistochemistry: 1/50 - 1/100.
Reactivity:	Human
Host:	Rabbit
Isotype:	Ig
Clonality:	Polyclonal
Immunogen:	This antibody is generated from rabbits immunized with a KLH conjugated synthetic peptide selected from the C-terminal region of human ERK5.
Specificity:	This antibody reacts to ERK5.
Formulation:	PBS with 0.09% (W/V) sodium azide State: Purified State: Liquid purified Ig
Concentration:	lot specific
Purification:	Protein G column, eluted with high and low pH buffers and neutralized immediately, followed by dialysis against PBS
Conjugation:	Unconjugated
Storage:	Store the antibody undiluted at 2-8°C for one month or (in aliquots) at -20°C for longer. Avoid repeated freezing and thawing.
Stability:	Shelf life: one year from despatch.
Gene Name:	mitogen-activated protein kinase 7
Database Link:	<a href="#">Entrez Gene 5598 Human Q13164</a>

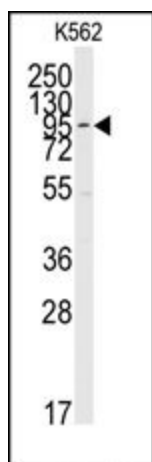
[View online »](#)

**Background:**

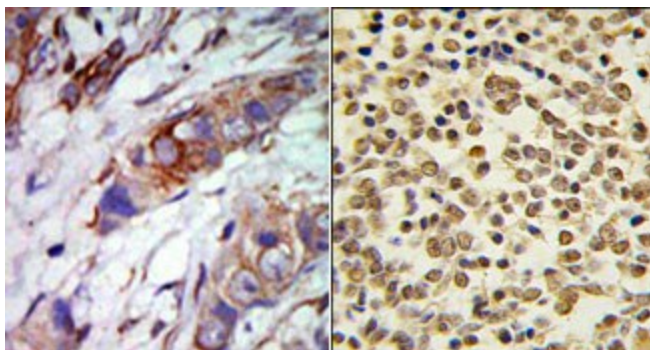
MEK5 and ERK5, a member of the MAP kinase subfamily of the Ser/Thr protein kinases, interact specifically with one another and not with MEK1/ERK1 or MEK2/ERK2 pathways. ERK5 is activated by tyrosine and threonine phosphorylation. It is expressed in many adult tissues, abundantly in heart, placenta, lung, kidney and skeletal muscle, but is not detectable in liver. The second proline-rich region may interact with actin targeting the kinase to a specific location in the cell. ERK5 is autophosphorylated on threonine and tyrosine residues when the C-terminal part of the kinase, which could have a regulatory role, is absent.

**Synonyms:**

Mitogen-activated protein kinase 7, Extracellular signal-regulated kinase 5, ERK4, Big MAP kinase 1, MAPK7

**Product images:**


Western blot analysis of anti-ERK5 C-term Pab in K562 cell line lysates (35ug/lane). ERK5 (arrow) was detected using the purified Pab.



(LEFT) Formalin-fixed and paraffin-embedded human cancer tissue reacted with the primary antibody, which was peroxidase-conjugated to the secondary antibody, followed by AEC staining. (RIGHT) Formalin-fixed and paraffin-embedded human kidney carcinoma tissue reacted with ERK5 Antibody (C-term), which was peroxidase-conjugated to the secondary antibody, followed by DAB staining.