

Product datasheet for **AP14117PU-N**

MAPK4 (C-term) Rabbit Polyclonal Antibody

Product data:

Product Type:	Primary Antibodies
Applications:	IHC, WB
Recommended Dilution:	ELISA: 1/1,000. Western blotting: 1/100 - 1/500. Immunohistochemistry: 1/10 - 1/50. Flow cytometry.
Reactivity:	Human, Mouse
Host:	Rabbit
Isotype:	Ig
Clonality:	Polyclonal
Immunogen:	This antibody is generated from rabbits immunized with a KLH conjugated synthetic peptide selected from the C-terminal region of human ERK4.
Specificity:	This antibody reacts to ERK4.
Formulation:	PBS with 0.09% (W/V) sodium azide State: Purified State: Liquid purified Ig
Concentration:	lot specific
Purification:	Protein G column, eluted with high and low pH buffers and neutralized immediately, followed by dialysis against PBS
Conjugation:	Unconjugated
Storage:	Store the antibody undiluted at 2-8°C for one month or (in aliquots) at -20°C for longer. Avoid repeated freezing and thawing.
Stability:	Shelf life: one year from despatch.
Gene Name:	mitogen-activated protein kinase 4
Database Link:	Entrez Gene 5596 Human P31152



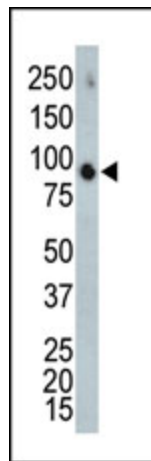
[View online »](#)

Background:

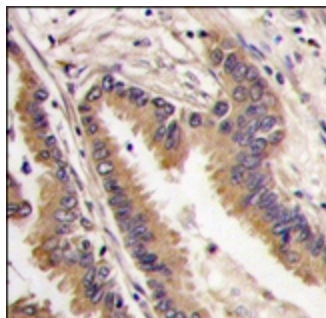
Protein kinases are enzymes that transfer a phosphate group from a phosphate donor, generally the γ phosphate of ATP, onto an acceptor amino acid in a substrate protein. By this basic mechanism, protein kinases mediate most of the signal transduction in eukaryotic cells, regulating cellular metabolism, transcription, cell cycle progression, cytoskeletal rearrangement and cell movement, apoptosis, and differentiation. With more than 500 gene products, the protein kinase family is one of the largest families of proteins in eukaryotes. The family has been classified in 8 major groups based on sequence comparison of their tyrosine (PTK) or serine/threonine (STK) kinase catalytic domains. The CMGC group consists of 60 kinases including the cyclin-dependent kinase (CDK) and close relatives family, the MAP kinase (ERK) family, the glycogen synthase kinase 3 (GSK3) family, and the Cdc2-like kinase (CLK) family.

Synonyms:

Mitogen-activated protein kinase 4, Extracellular signal-regulated kinase 4, p63-MAPK

Product images:

Western blot analysis of anti-ERK4 Pab in mouse brain tissue lysate. ERK4 (arrow) was detected using purified Pab. Secondary HRP-anti-rabbit was used for signal visualization with chemiluminescence.



Formalin-fixed and paraffin-embedded human lung carcinoma tissue reacted with ERK4 antibody (C-term), which was peroxidase-conjugated to the secondary antibody, followed by DAB staining.