

Product datasheet for **AP14108PU-N**

ARSB (C-term) Rabbit Polyclonal Antibody

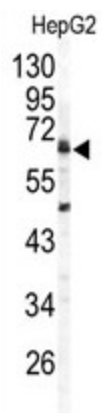
Product data:

Product Type:	Primary Antibodies
Applications:	WB
Recommended Dilution:	ELISA: 1/1,000. Western blot: 1/50 - 1/100.
Reactivity:	Human
Host:	Rabbit
Isotype:	Ig
Clonality:	Polyclonal
Immunogen:	This antibody is generated from rabbits immunized with a KLH conjugated synthetic peptide selected from the C-terminal region of human ARSB.
Specificity:	This antibody reacts to ARSB.
Formulation:	PBS with 0.09% (W/V) sodium azide State: Purified State: Liquid purified Ig
Concentration:	lot specific
Purification:	Prepared by Saturated Ammonium Sulfate (SAS) precipitation followed by dialysis against PBS
Conjugation:	Unconjugated
Storage:	Store the antibody undiluted at 2-8°C for one month or (in aliquots) at -20°C for longer. Avoid repeated freezing and thawing.
Stability:	Shelf life: one year from despatch.
Gene Name:	arylsulfatase B
Database Link:	Entrez Gene 411 Human P15848
Background:	ARSB belongs to the sulfatase family. The arylsulfatase B homodimer hydrolyzes sulfate groups of N-Acetyl-D-galactosamine, chondroitin sulfate, and dermatan sulfate. The protein is targeted to the lysosome. Mucopolysaccharidosis type VI is an autosomal recessive lysosomal storage disorder resulting from a deficiency of arylsulfatase B.
Synonyms:	ASB, ARSB, G4S



[View online »](#)

Product images:



Western blot analysis of ARSB antibody (C-term) in HepG2 cell line lysates (35ug/lane). ARSB (arrow) was detected using the purified Pab