

Product datasheet for **AP14094PU-N**

Sprouty 4 (SPRY4) (C-term) Rabbit Polyclonal Antibody

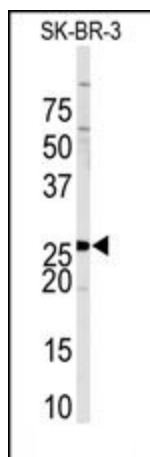
Product data:

Product Type:	Primary Antibodies
Applications:	WB
Recommended Dilution:	ELISA: 1/1,000. Western blotting: 1/50 - 1/100.
Reactivity:	Human
Host:	Rabbit
Isotype:	Ig
Clonality:	Polyclonal
Immunogen:	This antibody is generated from rabbits immunized with a KLH conjugated synthetic peptide selected from the C-terminal region of human SPRY4.
Specificity:	This antibody reacts to SPRY4.
Formulation:	PBS with 0.09% (W/V) sodium azide State: Aff - Purified State: Liquid purified Ig
Concentration:	lot specific
Purification:	Protein A column, followed by peptide affinity purification
Conjugation:	Unconjugated
Storage:	Store the antibody undiluted at 2-8°C for one month or (in aliquots) at -20°C for longer. Avoid repeated freezing and thawing.
Stability:	Shelf life: one year from despatch.
Gene Name:	sprouty RTK signaling antagonist 4
Database Link:	Entrez Gene 81848 Human Q9C004
Background:	SPRY4 is an inhibitor of the receptor-transduced mitogen-activated protein kinase (MAPK) signaling pathway. The protein is positioned upstream of RAS activation and impairs the formation of active GTP-RAS.
Synonyms:	Spry-4, Sprouty 4



[View online »](#)

Product images:



Western blot analysis of anti-SPRY4 Antibody (C-term) in Sk-Br-3 cell line lysates (35ug/lane). SPRY4 (arrow) was detected using the purified Pab.