

Product datasheet for **AP14093PU-N**

GOLPH3 (C-term) Rabbit Polyclonal Antibody

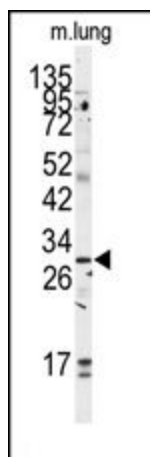
Product data:

Product Type:	Primary Antibodies
Applications:	WB
Recommended Dilution:	ELISA: 1/1,000. Western blotting: 1/50 - 1/100.
Reactivity:	Human, Mouse
Host:	Rabbit
Isotype:	Ig
Clonality:	Polyclonal
Immunogen:	This antibody is generated from rabbits immunized with a KLH conjugated synthetic peptide selected from the C-terminal region of human GOLPH3.
Specificity:	This antibody reacts to GOLPH3.
Formulation:	PBS with 0.09% (W/V) sodium azide State: Purified State: Liquid purified Ig
Concentration:	lot specific
Purification:	Prepared by Saturated Ammonium Sulfate (SAS) precipitation followed by dialysis against PBS
Conjugation:	Unconjugated
Storage:	Store the antibody undiluted at 2-8°C for one month or (in aliquots) at -20°C for longer. Avoid repeated freezing and thawing.
Stability:	Shelf life: one year from despatch.
Gene Name:	golgi phosphoprotein 3
Database Link:	Entrez Gene 64083 Human Q9H4A6
Background:	The Golgi complex plays a key role in the sorting and modification of proteins exported from the endoplasmic reticulum. This protein encoded by this gene is a peripheral membrane protein of the Golgi stack and may have a regulatory role in Golgi trafficking.
Synonyms:	GPP34, Coat protein GPP34, MIDAS



[View online »](#)

Product images:



Western blot analysis of anti-GOLPH3 Antibody (C-term) in mouse lung tissue lysates (35ug/lane). GOLPH3 (arrow) was detected using the purified Pab.