

Product datasheet for **AP14087PU-N**

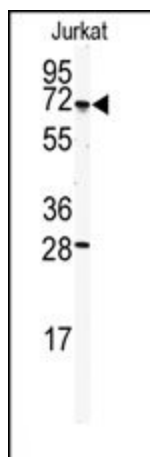
CETP (N-term) Rabbit Polyclonal Antibody

Product data:

Product Type:	Primary Antibodies
Applications:	WB
Recommended Dilution:	ELISA: 1/1,000. Western blotting: 1/50 - 1/100.
Reactivity:	Human
Host:	Rabbit
Isotype:	Ig
Clonality:	Polyclonal
Immunogen:	This antibody is generated from rabbits immunized with a KLH conjugated synthetic peptide selected from the N-terminal region of human CETP.
Specificity:	This antibody reacts to CETP.
Formulation:	PBS with 0.09% (W/V) sodium azide State: Purified State: Liquid purified Ig
Concentration:	lot specific
Purification:	Prepared by Saturated Ammonium Sulfate (SAS) precipitation followed by dialysis against PBS
Conjugation:	Unconjugated
Storage:	Store the antibody undiluted at 2-8°C for one month or (in aliquots) at -20°C for longer. Avoid repeated freezing and thawing.
Stability:	Shelf life: one year from despatch.
Gene Name:	cholesterol ester transfer protein
Database Link:	Entrez Gene 1071 Human P11597
Background:	Cholesterol ester transfer protein (CETP) transfers cholesterol esters between lipoproteins. CETP may effect susceptibility to atherosclerosis.
Synonyms:	HDLCQ10



[View online »](#)

Product images:

Western blot analysis of anti-CETP Antibody (N-term) in mouse jurkat tissue lysates (35ug/lane). CETP (arrow) was detected using the purified Pab.