

Product datasheet for **AP14085PU-N**

ADAMTS13 Rabbit Polyclonal Antibody

Product data:

Product Type:	Primary Antibodies
Applications:	IHC, WB
Recommended Dilution:	ELISA: 1/1,000. Western blotting: 1/1000. Immunohistochemistry: 1/10-1/50.
Reactivity:	Human
Host:	Rabbit
Isotype:	Ig
Clonality:	Polyclonal
Immunogen:	This antibody is generated from rabbits immunized with a KLH conjugated synthetic peptide between 829~858 amino acids from the center region of Human ADAMTS13.
Specificity:	This antibody recognizes ADAMTS13.
Formulation:	PBS with 0.09% (W/V) Sodium Azide as preservative. State: Aff - Purified State: Liquid purified Ig fraction.
Concentration:	lot specific
Purification:	Protein A Chromatography, followed by peptide affinity purification.
Conjugation:	Unconjugated
Storage:	Store the antibody undiluted at 2-8°C for one month or (in aliquots) at -20°C for longer. Avoid repeated freezing and thawing.
Stability:	Shelf life: one year from despatch.
Gene Name:	ADAM metalloproteinase with thrombospondin type 1 motif 13
Database Link:	Entrez Gene 11093 Human Q76LX8



[View online »](#)

Background:

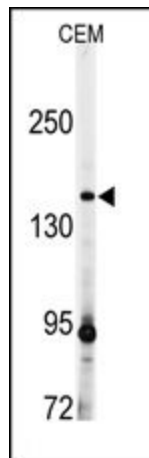
ADAMTS13 is a member of the ADAMTS (a disintegrin and metalloproteinase with thrombospondin motif) protein family. Members of the family share several distinct protein modules, including a propeptide region, a metalloproteinase domain, a disintegrin-like domain, and a thrombospondin type 1 (TS) motif. Individual members of this family differ in the number of C-terminal TS motifs, and some have unique C-terminal domains. The enzyme is the von Willebrand Factor (vWF)-cleaving protease, which is responsible for cleaving at the site of Tyr842-Met843 of the vWF molecule. A deficiency of this enzyme is associated with thrombotic thrombocytopenic purpura.

Synonyms:

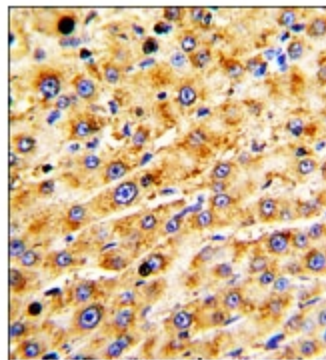
ADAMTS-13, ADAM-TS13, C9orf8, vWF-cleaving protease

Note:

Calculated MW: 153604 Da

Product images:

Western blot analysis: ADAMTS13 antibody staining of CEM cell line lysates (35 ug/lane). ADAMTS13 (arrow) was detected using the purified Pab.



Immunohistochemistry: ADAMTS13 antibody staining of Formalin-Fixed Paraffin-Embedded Human hepatocarcinoma followed by peroxidase-conjugation to the secondary antibody and DAB staining.