

Product datasheet for **AP14072PU-N**

BPIL1 (BPIFB2) (N-term) Rabbit Polyclonal Antibody

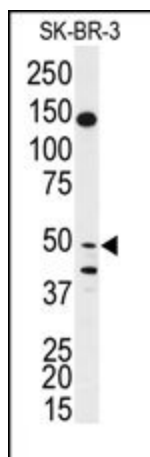
Product data:

Product Type:	Primary Antibodies
Applications:	WB
Recommended Dilution:	ELISA: 1/1,000. Western blotting: 1/50-1/100.
Reactivity:	Human
Host:	Rabbit
Isotype:	Ig
Clonality:	Polyclonal
Immunogen:	KLH conjugated synthetic peptide between 93-122 amino acids from the N-terminal region of Human BPIL1.
Specificity:	This antibody recognizes Human BPIL1 (N-term).
Formulation:	PBS containing 0.09% (W/V) Sodium Azide as preservative State: Purified State: Liquid purified Ig fraction
Concentration:	lot specific
Purification:	Prepared by Saturated Ammonium Sulfate (SAS) precipitation followed by dialysis against PBS
Conjugation:	Unconjugated
Storage:	Store undiluted at 2-8°C for one month or (in aliquots) at -20°C for longer. Avoid repeated freezing and thawing.
Stability:	Shelf life: one year from despatch.
Gene Name:	BPI fold containing family B member 2
Database Link:	Entrez Gene 80341 Human Q8N4F0
Background:	BPIL1 is a member of the lipid transfer/lipopolysaccharide binding protein (LT/LBP) family. This protein is highly expressed in hypertrophic tonsils.
Synonyms:	RYSR, C20orf184, LPLUNC2



[View online »](#)

Product images:



Western blot analysis of anti-BPIL1 Antibody (N-term) in SK-BR-3 cell line lysates (35ug/lane). BPIL1 (arrow) was detected using the purified Pab.