

## Product datasheet for **AP14071PU-N**

### Vinculin (VCL) (C-term) Rabbit Polyclonal Antibody

#### Product data:

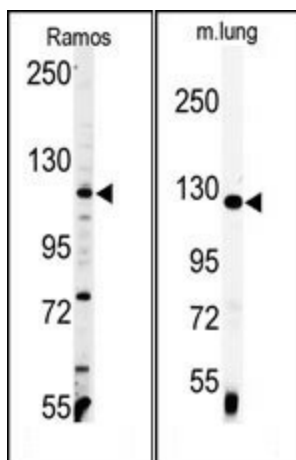
Product Type:	Primary Antibodies
Applications:	WB
Recommended Dilution:	ELISA: 1/1,000. Western blotting: 1/50 - 1/100.
Reactivity:	Human, Mouse
Host:	Rabbit
Isotype:	Ig
Clonality:	Polyclonal
Immunogen:	This antibody is generated from rabbits immunized with a KLH conjugated synthetic peptide selected from the C-terminal region of human VINC.
Specificity:	This antibody reacts to VINC.
Formulation:	PBS with 0.09% (W/V) sodium azide State: Purified State: Liquid purified Ig
Concentration:	lot specific
Purification:	Prepared by Saturated Ammonium Sulfate (SAS) precipitation followed by dialysis against PBS
Conjugation:	Unconjugated
Storage:	Store the antibody undiluted at 2-8°C for one month or (in aliquots) at -20°C for longer. Avoid repeated freezing and thawing.
Stability:	Shelf life: one year from despatch.
Gene Name:	vinculin
Database Link:	<a href="#">Entrez Gene 7414 Human P18206</a>
Background:	VINC is a cytoskeletal protein associated with cell-cell and cell-matrix junctions, where it is thought to function as one of several interacting proteins involved in anchoring F-actin to the membrane. Defects in VCL are the cause of cardiomyopathy dilated type 1W. Dilated cardiomyopathy is a disorder characterized by ventricular dilation and impaired systolic function, resulting in congestive heart failure and arrhythmia.



[View online »](#)

Synonyms: Metavinculin

### Product images:



(LEFT) Western blot analysis of anti-VINC Antibody (C-term) in Ramos cell line lysates (35ug/lane). VINC (arrow) was detected using the purified Pab. (RIGHT) Western blot analysis of anti-VINC Antibody (C-term) in mouse lung tissue lysates (35ug/lane). VINC (arrow) was detected using the purified Pab.