

Product datasheet for **AP14065PU-N**

Annexin A2 (ANXA2) (C-term) Rabbit Polyclonal Antibody

Product data:

Product Type:	Primary Antibodies
Applications:	IHC, WB
Recommended Dilution:	ELISA: 1/1,000. Western blotting: 1/50 - 1/100. Immunohistochemistry: 1/10 - 1/50.
Reactivity:	Human
Host:	Rabbit
Isotype:	Ig
Clonality:	Polyclonal
Immunogen:	This antibody is generated from rabbits immunized with a KLH conjugated synthetic peptide selected from the C-terminal region of human ANXA2.
Specificity:	This antibody reacts to ANXA2.
Formulation:	PBS with 0.09% (W/V) sodium azide State: Purified State: Liquid purified Ig
Concentration:	lot specific
Purification:	Prepared by Saturated Ammonium Sulfate (SAS) precipitation followed by dialysis against PBS.
Conjugation:	Unconjugated
Storage:	Store the antibody undiluted at 2-8°C for one month or (in aliquots) at -20°C for longer. Avoid repeated freezing and thawing.
Stability:	Shelf life: one year from despatch.
Gene Name:	annexin A2
Database Link:	Entrez Gene 302 Human P07355

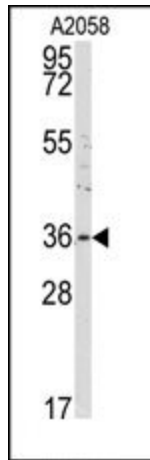


[View online »](#)

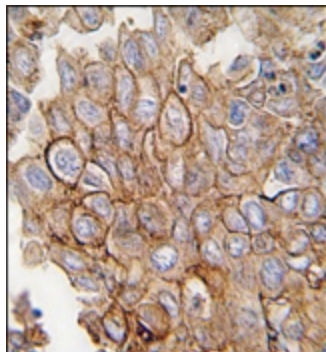
Background: ANXA2 is a member of the annexin family. Members of this calcium-dependent phospholipid-binding protein family play a role in the regulation of cellular growth and in signal transduction pathways. This protein functions as an autocrine factor which heightens osteoclast formation and bone resorption.

Synonyms: ANX2, ANX2L4, CAL1H, LPC2D, Annexin-2, Annexin II, Lipocortin II, Calpactin I heavy chain, Chromobindin-8, p36, Protein I

Product images:



Western blot analysis of anti-ANXA2 Antibody (C-term) in A2058 cell line lysates (35ug/lane). ANXA2 (arrow) was detected using the purified Pab.



Formalin-fixed and paraffin-embedded human lung carcinoma tissue reacted with ANXA2 antibody (C-term), which was peroxidase-conjugated to the secondary antibody, followed by DAB staining.