

Product datasheet for **AP14060PU-N**

GIT1 Rabbit Polyclonal Antibody

Product data:

Product Type:	Primary Antibodies
Applications:	IHC, WB
Recommended Dilution:	ELISA: 1/1,000. Western Blot: 1/50 - 1/100. Immunohistochemistry: 1/:10 - 1/50.
Reactivity:	Human
Host:	Rabbit
Isotype:	Ig
Clonality:	Polyclonal
Immunogen:	KLH conjugated synthetic peptide corresponding to amino acid residues surrounding Y510 of human GIT1.
Specificity:	This antibody reacts to GIT1.
Formulation:	PBS with 0.09% (W/V) sodium azide State: Aff - Purified State: Liquid purified Ig
Concentration:	lot specific
Purification:	Affinity chromatography on Protein A
Conjugation:	Unconjugated
Storage:	Store the antibody undiluted at 2-8°C for one month or (in aliquots) at -20°C for longer. Avoid repeated freezing and thawing.
Stability:	Shelf life: one year from despatch.
Gene Name:	GIT ArfGAP 1
Database Link:	Entrez Gene 28964 Human Q9Y2X7



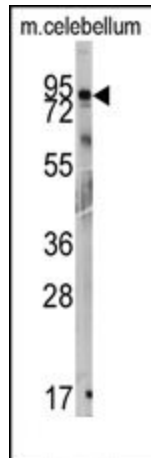
[View online »](#)

Background:

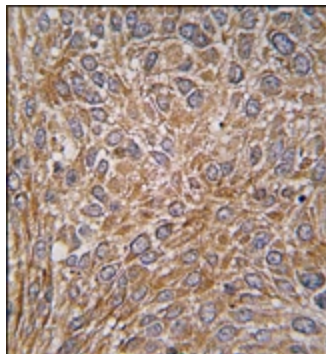
GIT1 is a GTPase-activating protein for the ADP ribosylation factor family. It may serve as a scaffold to bring together molecules to form signaling modules controlling vesicle trafficking, adhesion and cytoskeletal organization. It increases the speed of cell migration, as well as the size and rate of formation of protrusions, possibly by targeting PAK1 to adhesions and the leading edge of lamellipodia.

Synonyms:

GRK-interacting protein 1, CAT1

Product images:

Western blot analysis of anti-GIT1 Antibody (Y510) in mouse cerebellum tissue lysates (35ug/lane). GIT1 (arrow) was detected using the purified Pab.



Formalin-fixed and paraffin-embedded human lung carcinoma tissue reacted with GIT1 Antibody (Y510), which was peroxidase-conjugated to the secondary antibody, followed by DAB staining.