

## Product datasheet for **AP14056PU-N**

### Leucyl tRNA synthetase (LARS) (C-term) Rabbit Polyclonal Antibody

#### Product data:

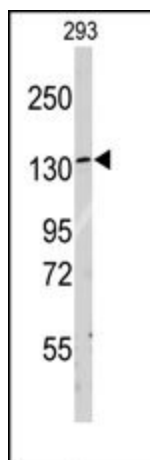
Product Type:	Primary Antibodies
Applications:	IHC, WB
Recommended Dilution:	ELISA: 1/1,000. Western blotting: 1/50 - 1/100. Immunohistochemistry: 1/10 - 1/50.
Reactivity:	Human
Host:	Rabbit
Isotype:	Ig
Clonality:	Polyclonal
Immunogen:	This antibody is generated from rabbits immunized with a KLH conjugated synthetic peptide selected from the C-terminal region of human LARS.
Specificity:	This antibody reacts to LARS.
Formulation:	PBS with 0.09% (W/V) sodium azide State: Purified State: Liquid purified Ig
Concentration:	lot specific
Purification:	Prepared by Saturated Ammonium Sulfate (SAS) precipitation followed by dialysis against PBS
Conjugation:	Unconjugated
Storage:	Store the antibody undiluted at 2-8°C for one month or (in aliquots) at -20°C for longer. Avoid repeated freezing and thawing.
Stability:	Shelf life: one year from despatch.
Gene Name:	leucyl-tRNA synthetase
Database Link:	<a href="#">Entrez Gene 51520 Human Q9P2J5</a>
Background:	LARS, a cytosolic leucine-tRNA synthetase, a member of the class I aminoacyl-tRNA synthetase family. This enzyme catalyzes the ATP-dependent ligation of L-leucine to tRNA(Leu). It is found in the cytoplasm as part of a multisynthetase complex and interacts with the arginine tRNA synthetase through its C-terminal domain.



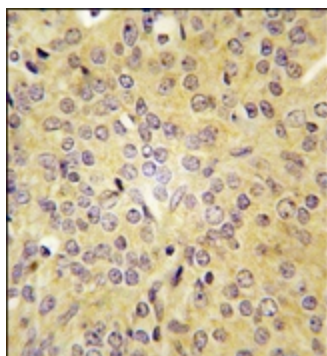
[View online »](#)

Synonyms: LARS, KIAA1352, Leucyl-tRNA synthetase, cytoplasmic, EC=6.1.1.4, Leucine-tRNA ligase, LeuRS

### Product images:



Western blot analysis of anti-LARS Antibody (C-term) in 293 cell line lysates (35ug/lane). LARS (arrow) was detected using the purified Pab (1:60dilution).



Formalin-fixed and paraffin-embedded human prostate carcinoma tissue reacted with LARS antibody (C-term), which was peroxidase-conjugated to the secondary antibody, followed by DAB staining.