

Product datasheet for **AP14045PU-N**

TPTEP2-CSNK1E (C-term) Rabbit Polyclonal Antibody

Product data:

Product Type:	Primary Antibodies
Applications:	IHC, WB
Recommended Dilution:	ELISA: 1/1,000. Western blotting: 1/100 - 1/500. Immunohistochemistry: 1/50 - 1/100.
Reactivity:	Human
Host:	Rabbit
Isotype:	Ig
Clonality:	Polyclonal
Immunogen:	This antibody is generated from rabbits immunized with a KLH conjugated synthetic peptide selected from the C-terminal region of human CK1e.
Specificity:	This antibody reacts to CK1 epsilon (CK1e).
Formulation:	PBS with 0.09% (W/V) sodium azide State: Purified State: Liquid purified Ig
Concentration:	lot specific
Purification:	Protein G column, eluted with high and low pH buffers and neutralized immediately, followed by dialysis against PBS
Conjugation:	Unconjugated
Storage:	Store the antibody undiluted at 2-8°C for one month or (in aliquots) at -20°C for longer. Avoid repeated freezing and thawing.
Stability:	Shelf life: one year from despatch.
Gene Name:	TPTEP2-CSNK1E readthrough
Database Link:	Entrez Gene 102800317 Human P49674



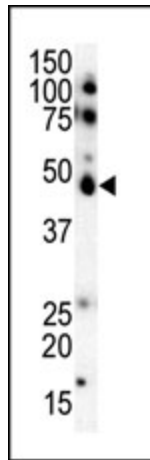
[View online »](#)

Background:

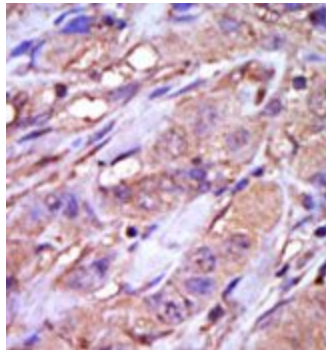
CK1e is a serine/threonine protein kinase and a member of the casein kinase I protein family, whose members have been implicated in the control of cytoplasmic and nuclear processes, including DNA replication and repair. This protein is found in the cytoplasm as a monomer and can phosphorylate a variety of proteins, including itself. It has been shown to phosphorylate period, a circadian rhythm protein.

Synonyms:

CKI-epsilon, CKIe, CSNK1E

Product images:

Western blot analysis of anti-CK1e C-term Pab in SKBR3 cell lysate. CK1e (arrow) was detected using purified Pab. Secondary HRP-anti-rabbit was used for signal visualization with chemiluminescence.



Formalin-fixed and paraffin-embedded human cancer tissue reacted with the primary antibody, which was peroxidase-conjugated to the secondary antibody, followed by DAB staining.