

Product datasheet for **AP14042PU-N**

Casein Kinase 1 alpha (CSNK1A1) (C-term) Rabbit Polyclonal Antibody

Product data:

Product Type:	Primary Antibodies
Applications:	IHC, WB
Recommended Dilution:	ELISA: 1/1,000. Western blotting: 1/100 - 1/500. Immunohistochemistry: 1/10 - 1/50. Flow cytometry.
Reactivity:	Human
Host:	Rabbit
Isotype:	Ig
Clonality:	Polyclonal
Immunogen:	This antibody is generated from rabbits immunized with a KLH conjugated synthetic peptide selected from the C-terminal region of human CK1a.
Specificity:	This antibody reacts to CK1a.
Formulation:	PBS with 0.09% (W/V) sodium azide State: Purified State: Liquid purified Ig
Concentration:	lot specific
Purification:	Protein G column, eluted with high and low pH buffers and neutralized immediately, followed by dialysis against PBS
Conjugation:	Unconjugated
Storage:	Store the antibody undiluted at 2-8°C for one month or (in aliquots) at -20°C for longer. Avoid repeated freezing and thawing.
Stability:	Shelf life: one year from despatch.
Gene Name:	casein kinase 1 alpha 1
Database Link:	Entrez Gene 1452 Human P48729



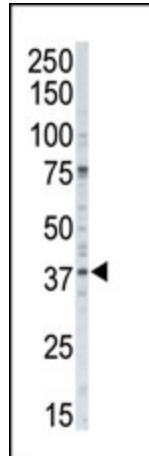
[View online »](#)

Background:

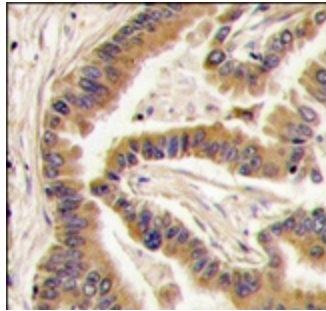
Casein kinases are operationally defined by their preferential utilization of acidic proteins such as caseins as substrates. CK1a can phosphorylate a large number of proteins. This cytoplasmic protein participates in Wnt signaling. It has been demonstrated to phosphorylate CTNNB1 on Ser-45 and to interact with the Axin complex.

Synonyms:

Casein kinase I alpha, CKI-alpha, CK1

Product images:

Western blot analysis of anti-CK1a Pab in A375 cell lysate. CK1a (arrow) was detected using purified Pab. Secondary HRP-anti-rabbit was used for signal visualization with chemiluminescence.



Formalin-fixed and paraffin-embedded human lung carcinoma tissue reacted with CK1a antibody (C-term), which was peroxidase-conjugated to the secondary antibody, followed by DAB staining.