

Product datasheet for **AP14041PU-N**

RMC1 Rabbit Polyclonal Antibody

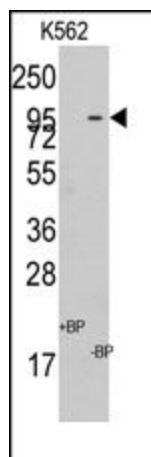
Product data:

Product Type:	Primary Antibodies
Applications:	WB
Recommended Dilution:	ELISA: 1/1,000. Western blotting: 1/50 - 1/100.
Reactivity:	Human
Host:	Rabbit
Isotype:	Ig
Clonality:	Polyclonal
Immunogen:	This antibody is generated from rabbits immunized with a KLH conjugated synthetic peptide at the Center of human MIC1.
Specificity:	This antibody reacts to MIC1.
Formulation:	PBS with 0.09% (W/V) sodium azide State: Purified State: Liquid purified Ig
Concentration:	lot specific
Purification:	Prepared by Saturated Ammonium Sulfate (SAS) precipitation followed by dialysis against PBS
Conjugation:	Unconjugated
Storage:	Store the antibody undiluted at 2-8°C for one month or (in aliquots) at -20°C for longer. Avoid repeated freezing and thawing.
Stability:	Shelf life: one year from despatch.
Gene Name:	chromosome 18 open reading frame 8
Database Link:	Entrez Gene 29919 Human Q96DM3
Background:	Macrophage inhibitory cytokine-1 (MIC-1) is a member of the transforming growth factor- β superfamily, which is overexpressed in a variety of human cancers, including breast and gastric cancer.
Synonyms:	MIC1



[View online »](#)

Product images:



Western blot analysis of anti-MIC1 (Center) Pab pre-incubated with and without blocking peptide (#BP7299c) in Jurkat cell line lysate. MIC1 (Center) (arrow) was detected using the purified Pab (1:1500 dilution).