

Product datasheet for **AP14037PU-N**

Lefty (LEFTY1) (C-term) Rabbit Polyclonal Antibody

Product data:

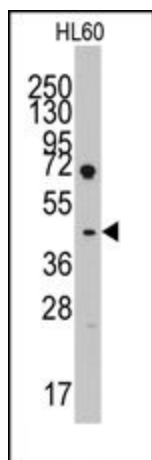
Product Type:	Primary Antibodies
Applications:	IHC, WB
Recommended Dilution:	ELISA: 1/1,000. Western blotting: 1/50 - 1/100. Immunohistochemistry: 1/10 - 1/50.
Reactivity:	Human
Host:	Rabbit
Isotype:	Ig
Clonality:	Polyclonal
Immunogen:	This antibody is generated from rabbits immunized with a KLH conjugated synthetic peptide at the C-term of human LEFTB.
Specificity:	This antibody reacts to Lefty (LEFTB).
Formulation:	PBS with 0.09% (W/V) sodium azide State: Purified State: Liquid purified Ig
Concentration:	lot specific
Purification:	Prepared by Saturated Ammonium Sulfate (SAS) precipitation followed by dialysis against PBS
Conjugation:	Unconjugated
Storage:	Store the antibody undiluted at 2-8°C for one month or (in aliquots) at -20°C for longer. Avoid repeated freezing and thawing.
Stability:	Shelf life: one year from despatch.
Gene Name:	left-right determination factor 1
Database Link:	Entrez Gene 10637 Human O75610
Background:	LEFTB is a member of the TGF-beta family of proteins. A similar secreted protein in mouse plays a role in left-right asymmetry determination of organ systems during development. Alternative processing of this protein can yield three different products.



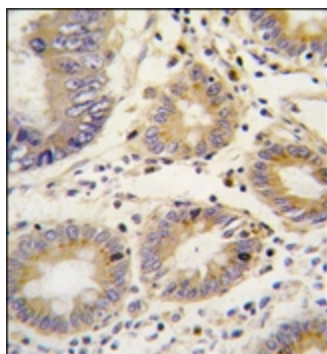
[View online »](#)

Synonyms: LEFTY1, LEFTB, LEFTYB, Left-right determination factor 1, Protein lefty-1, Left-right determination factor B, Protein lefty-B

Product images:



Western blot analysis of anti-LEFTB (C-term) Pab in HL60 cell line lysates (35ug/lane). LEFTB (arrow) was detected using the purified Pab (1:60 dilution).



Formalin-fixed and paraffin-embedded human colon carcinoma tissue reacted with LEFTB antibody (C-term), which was peroxidase-conjugated to the secondary antibody, followed by DAB staining.