

## Product datasheet for **AP14034PU-N**

### Thymidine Phosphorylase (TYMP) (Center) Rabbit Polyclonal Antibody

#### Product data:

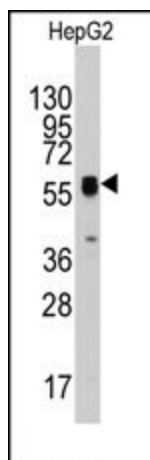
Product Type:	Primary Antibodies
Applications:	IHC, WB
Recommended Dilution:	ELISA: 1/1,000. Western blotting: 1/50 - 1/100. Immunohistochemistry: 1/10 - 1/50.
Reactivity:	Human
Host:	Rabbit
Isotype:	Ig
Clonality:	Polyclonal
Immunogen:	This antibody is generated from rabbits immunized with a KLH conjugated synthetic peptide at the Center of human ECGF1.
Specificity:	This antibody reacts to ECGF1.
Formulation:	PBS with 0.09% (W/V) sodium azide State: Purified State: Liquid purified Ig
Concentration:	lot specific
Purification:	Protein A column, followed by peptide affinity purification
Conjugation:	Unconjugated
Storage:	Store the antibody undiluted at 2-8°C for one month or (in aliquots) at -20°C for longer. Avoid repeated freezing and thawing.
Stability:	Shelf life: one year from despatch.
Gene Name:	thymidine phosphorylase
Database Link:	<a href="#">Entrez Gene 1890 Human P19971</a>
Background:	ECGF1 is an angiogenic factor which promotes angiogenesis in vivo and stimulates the in vitro growth of a variety of endothelial cells. It has a highly restricted target cell specificity acting only on endothelial cells. Mutations in the gene encoding ECGF1 have been associated with mitochondrial neurogastrointestinal encephalomyopathy.



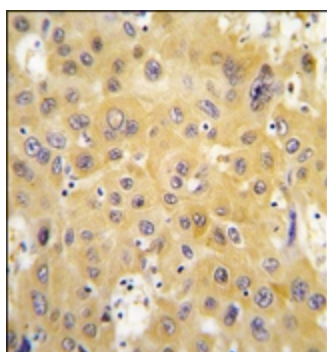
[View online »](#)

Synonyms: TdRPase, PD-ECGF, ECGF1, Gliostatin

### Product images:



Western blot analysis of anti-ECGF1 (Center) Pab in HepG2 cell line lysates (35ug/lane). ECGF1 (arrow) was detected using the purified Pab (1:60 dilution).



Formalin-fixed and paraffin-embedded human hepatocarcinoma tissue reacted with ECGF1 antibody (Center), which was peroxidase-conjugated to the secondary antibody, followed by DAB staining.