

Product datasheet for **AP14030PU-N**

Aromatase (CYP19A1) (Center) Rabbit Polyclonal Antibody

Product data:

Product Type:	Primary Antibodies
Applications:	WB
Recommended Dilution:	Peptide ELISA: 1/1,000. Western blotting: 1/1000.
Reactivity:	Human
Host:	Rabbit
Isotype:	Ig
Clonality:	Polyclonal
Immunogen:	KLH conjugated synthetic peptide between 221~253 amino acids from from the Central region of Human CYP19A1.
Specificity:	This antibody reacts to Aromatase (CYP19A1).
Formulation:	PBS with 0.09% (W/V) sodium azide State: Purified State: Liquid purified Ig
Concentration:	lot specific
Purification:	Prepared by Saturated Ammonium Sulfate (SAS) precipitation followed by dialysis against PBS
Conjugation:	Unconjugated
Storage:	Store undiluted at 2-8°C for one month or (in aliquots) at -20°C for longer. Avoid repeated freezing and thawing.
Stability:	Shelf life: one year from despatch.
Gene Name:	cytochrome P450 family 19 subfamily A member 1
Database Link:	Entrez Gene 1588 Human P11511



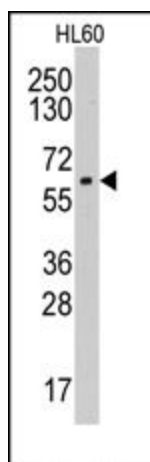
[View online »](#)

Background:

CYP19A1 is a member of the cytochrome P450 superfamily of enzymes. The cytochrome P450 proteins are monooxygenases which catalyze many reactions involved in drug metabolism and synthesis of cholesterol, steroids and other lipids. This protein localizes to the endoplasmic reticulum and catalyzes the last steps of estrogen biosynthesis, three successive hydroxylations of the A ring of androgens. Mutations in this gene can result in either increased or decreased aromatase activity; the associated phenotypes suggest that estrogen functions both as a sex steroid hormone and in growth or differentiation.

Synonyms:

Cytochrome P450 19A1, CYPXIX, Estrogen synthetase, P450AROM, CYP19A1, ARO1, CYAR, CYP19

Product images:

CYP19A1 antibody staining of HL60 cell line lysates by Western blot (35 ug/lane). CYP19A1 (arrow) was detected using the purified antibody at 1/60 dilution.