

## Product datasheet for **AP14022PU-N**

### JLP (SPAG9) (Center) Rabbit Polyclonal Antibody

#### Product data:

Product Type:	Primary Antibodies
Applications:	IHC, WB
Recommended Dilution:	ELISA: 1/1,000. Western blot: 1/50-1/100. Immunohistochemistry: 1/10 -1/50.
Reactivity:	Human
Host:	Rabbit
Isotype:	Ig
Clonality:	Polyclonal
Immunogen:	This antibody is generated from rabbits immunized with a KLH conjugated synthetic peptide between 610~640 amino acids from the Center region of Human JLP/SPAG9.
Specificity:	This antibody detects SPAG9 at Center.
Formulation:	PBS with 0.09% (W/V) Sodium Azide State: Purified State: Liquid purified Ig fraction
Concentration:	lot specific
Purification:	Prepared by Saturated Ammonium Sulfate (SAS) precipitation followed by dialysis against PBS.
Conjugation:	Unconjugated
Storage:	Store the antibody undiluted at 2-8°C for one month or (in aliquots) at -20°C for longer. Avoid repeated freezing and thawing.
Stability:	Shelf life: one year from despatch.
Gene Name:	sperm associated antigen 9
Database Link:	<a href="#">Entrez Gene 9043 Human O60271</a>
Background:	SPAG9, which is abundantly expressed in testicular haploid germ cells, is recognized by sperm-agglutinating antibodies and implicated in infertility.

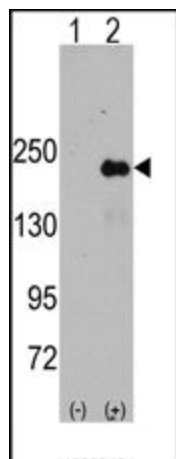


[View online »](#)

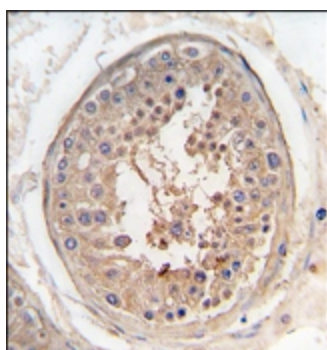
**Synonyms:** Sperm-associated antigen 9, Sperm-specific protein, Sperm surface protein, JNK-interacting protein 4, JIP-4, HSS, KIAA0516, MAPK8IP4, SYD1, HLC6, HLC-6, PHET, CT89, Sunday driver 1

**Note:** Calculated Molecular weight: 146205 Da

**Product images:**



Western blot analysis of SPAG9 (arrow) using rabbit polyclonal SPAG9 Antibody (Center). 293 cell lysates (2 ug/lane) either nontransfected (Lane 1) or transiently transfected with the SPAG9 gene (Lane 2)



Formalin-fixed and paraffin-embedded human testis tissue reacted with SPAG9 antibody (Center), which was peroxidase-conjugated to the secondary antibody, followed by DAB staining