

Product datasheet for **AP14007PU-N**

TGIF (TGIF1) (Center) Rabbit Polyclonal Antibody

Product data:

Product Type:	Primary Antibodies
Applications:	WB
Recommended Dilution:	ELISA 1:1,000. Western blot 1:50 - 1:100.
Reactivity:	Human
Host:	Rabbit
Isotype:	Ig
Clonality:	Polyclonal
Immunogen:	This antibody is generated from rabbits immunized with a KLH conjugated synthetic peptide selected from the Center region of human TGIF1.
Specificity:	This antibody detects TGIF at center.
Formulation:	Saturated Ammonium Sulfate (SAS) precipitation followed by dialysis against PBS. State: Purified State: Liquid Ig fraction
Concentration:	lot specific
Purification:	PBS with 0.09% (W/V) sodium azide
Conjugation:	Unconjugated
Storage:	Store the antibody at 2 - 8 °C up to one month or (in aliquots) at -20 °C for longer. Avoid repeated freezing and thawing.
Stability:	Shelf life: one year from despatch.
Gene Name:	TGFB induced factor homeobox 1
Database Link:	Entrez Gene 7050 Human Q15583



[View online »](#)

Background:

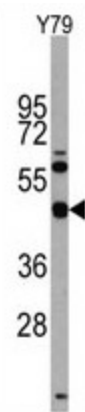
TGIF1 is a member of the three-amino acid loop extension (TALE) superclass of atypical homeodomains. TALE homeobox proteins are highly conserved transcription regulators. This particular homeodomain binds to a previously characterized retinoid X receptor responsive element from the cellular retinol-binding protein II promoter. In addition to its role in inhibiting 9-cis-retinoic acid-dependent RXR alpha transcription activation of the retinoic acid responsive element, the protein is an active transcriptional co-repressor of SMAD2 and may participate in the transmission of nuclear signals during development and in the adult. Mutations in this gene are associated with holoprosencephaly type 4, which is a structural anomaly of the brain.

Synonyms:

TGIF

Note:

Molecular weight: 43044 Da

Product images:

Western blot analysis of anti-TGIF1 Antibody (Center) in Y79 cell line lysates (35 ug/lane). TGIF1 (arrow) was detected using the purified Pab (1:60 dilution).