

Product datasheet for **AP14002PU-N**

BARX1 (Center) Rabbit Polyclonal Antibody

Product data:

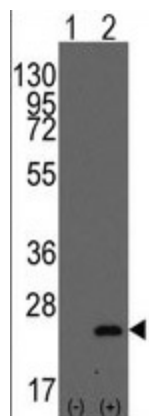
Product Type:	Primary Antibodies
Applications:	WB
Recommended Dilution:	ELISA 1:1,000. Western blot 1:10 - 1:50.
Reactivity:	Human
Host:	Rabbit
Isotype:	Ig
Clonality:	Polyclonal
Immunogen:	This antibody is generated from rabbits immunized with a KLH conjugated synthetic peptide selected from the Center region of human BARX1.
Specificity:	This antibody detects BarX1 at Center.
Formulation:	PBS with 0.09% (W/V) sodium azide State: Purified State: Liquid Ig fraction
Concentration:	lot specific
Purification:	Saturated Ammonium Sulfate (SAS) precipitation followed by dialysis against PBS.
Conjugation:	Unconjugated
Storage:	Store the antibody at 2 - 8 °C up to one month or (in aliquots) at -20 °C for longer. Avoid repeated freezing and thawing.
Stability:	Shelf life: one year from despatch.
Gene Name:	BARX homeobox 1
Database Link:	Entrez Gene 56033 Human Q9HBU1
Background:	BarX1 is a member of the Bar subclass of homeobox transcription factors. Studies of the mouse and chick homolog suggest this protein may play a role in developing teeth and craniofacial mesenchyme of neural crest origin. The protein may also be associated with differentiation of stomach epithelia.
Synonyms:	Homeobox protein BarH-like 1



[View online »](#)

Note: Molecular weight: 24061 Da

Product images:



Western blot analysis of BarX1 (arrow) using rabbit polyclonal BarX1 Antibody (C-term). 293 cell lysates (2 ug/lane) either nontransfected (Lane 1) or transiently transfected with the BarX1 gene (Lane 2) (Origene Technologies).