

## Product datasheet for **AP13999PU-N**

### **Nrf2 (NFE2L2) (N-term) Rabbit Polyclonal Antibody**

#### **Product data:**

<b>Product Type:</b>	Primary Antibodies
<b>Applications:</b>	WB
<b>Recommended Dilution:</b>	ELISA 1:1,000. Western blot 1:50 - 1:100.
<b>Reactivity:</b>	Human
<b>Host:</b>	Rabbit
<b>Isotype:</b>	Ig
<b>Clonality:</b>	Polyclonal
<b>Immunogen:</b>	This antibody is generated from rabbits immunized with a KLH conjugated synthetic peptide selected from the N-terminal region of human NRF2.
<b>Specificity:</b>	This antibody detects NFE2L2 at N-term.
<b>Formulation:</b>	PBS with 0.09% (W/V) sodium azide State: Purified State: Liquid Ig fraction
<b>Concentration:</b>	lot specific
<b>Purification:</b>	Protein G column, eluted with high and low pH buffers and neutralized immediately, followed by dialysis against PBS.
<b>Conjugation:</b>	Unconjugated
<b>Storage:</b>	Store the antibody at 2 - 8 °C up to one month or (in aliquots) at -20 °C for longer. Avoid repeated freezing and thawing.
<b>Stability:</b>	Shelf life: one year from despatch.
<b>Gene Name:</b>	nuclear factor, erythroid 2 like 2
<b>Database Link:</b>	<a href="#">Entrez Gene 4780 Human Q16236</a>
<b>Background:</b>	NFE2 (MIM 601490), NFE2L1 (MIM 163260), and NFE2L2 comprise a family of human basic leucine zipper (bZIP) transcription factors. They share highly conserved regions that are distinct from other bZIP families, such as JUN (MIM 165160) and FOS (MIM 164810), although remaining regions have diverged considerably from each other (Chan et al., 1995).

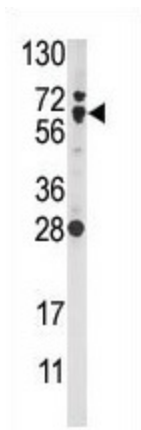


[View online »](#)

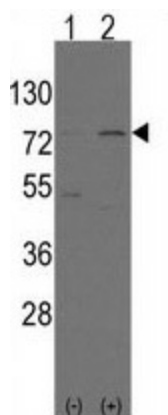
**Synonyms:** NRF2,HEBP1

**Note:** Molecular weight: 67827 Da

**Product images:**



Western blot analysis of anti-NFE2L2 (N-term) in Ramos cell line lysates (35 ug/lane). Nrf2 (arrow) was detected using the purified Pab (1:60 dilution).



Western blot analysis of Nrf2 (Nfe2l2) (arrow) using rabbit polyclonal Nrf2 (Nfe2l2) Antibody (N-term). 293 cell lysates (2 ug/lane) either nontransfected (Lane 1) or transiently transfected with the Nrf2 (Nfe2l2) gene (Lane 2) (Origene Technologies).