

Product datasheet for **AP13998PU-N**

APPBP2 Rabbit Polyclonal Antibody

Product data:

Product Type:	Primary Antibodies
Applications:	WB
Recommended Dilution:	ELISA: 1/1,000. Western blot: 1/1000.
Reactivity:	Human
Host:	Rabbit
Isotype:	Ig
Clonality:	Polyclonal
Immunogen:	KLH conjugated synthetic peptide between 242-271 amino acids from the Central region of human PAT1 (APPBP2).
Specificity:	This antibody detects PAT1 (APPBP2) at Center.
Formulation:	PBS with 0.09% (W/V) sodium azide State: Purified State: Liquid Ig fraction
Concentration:	lot specific
Purification:	Protein G column, eluted with high and low pH buffers and neutralized immediately, followed by dialysis against PBS.
Conjugation:	Unconjugated
Storage:	Store undiluted at 2-8°C for one month or (in aliquots) at -20°C for longer. Avoid repeated freezing and thawing.
Stability:	Shelf life: one year from despatch.
Gene Name:	amyloid beta precursor protein binding protein 2
Database Link:	Entrez Gene 10513 Human Q92624



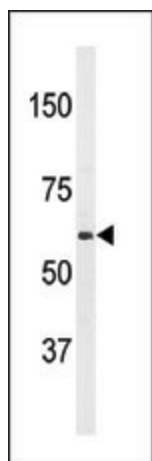
[View online »](#)

Background: APPBP2 interacts with microtubules and is functionally associated with beta-amyloid precursor protein transport and/or processing. The beta-amyloid precursor protein is a cell surface protein with signal-transducing properties, and it is thought to play a role in the pathogenesis of Alzheimer's disease. This protein has been found to be highly expressed in breast cancer.

Synonyms: KIAA0228, PAT1

Note: Molecular weight: 66722 Da

Product images:



Western blot analysis of anti-PAT1 (rifined Pab (1:60 dilution).