

## Product datasheet for **AP13991PU-N**

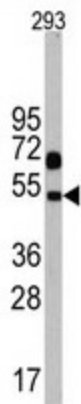
### **Nptx1 Rabbit Polyclonal Antibody**

#### **Product data:**

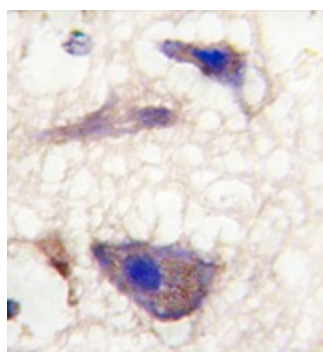
<b>Product Type:</b>	Primary Antibodies
<b>Applications:</b>	IHC, WB
<b>Recommended Dilution:</b>	ELISA 1:1,000. Western blot 1:50 - 1:100. Immunohistochemistry 1:10 - 1:50.
<b>Reactivity:</b>	Human
<b>Host:</b>	Rabbit
<b>Isotype:</b>	Ig
<b>Clonality:</b>	Polyclonal
<b>Immunogen:</b>	This antibody is generated from rabbits immunized with a KLH conjugated synthetic peptide selected from the C-terminal region of human NP1.
<b>Specificity:</b>	This antibody detects NP1 (Nptx1) at C-term.
<b>Formulation:</b>	State: Purified State: Liquid Ig fraction
<b>Concentration:</b>	lot specific
<b>Conjugation:</b>	Unconjugated
<b>Storage:</b>	Store the antibody at 2 - 8 °C up to one month or (in aliquots) at -20 °C for longer. Avoid repeated freezing and thawing.
<b>Stability:</b>	Shelf life: one year from despatch.
<b>Gene Name:</b>	neuronal pentraxin 1
<b>Database Link:</b>	<a href="#">P47971</a>
<b>Background:</b>	NPTX1 is a member of the neuronal pentraxin gene family. Human neuronal pentraxin 1 is similar to the rat NP1 gene which encodes a binding protein for the snake venom toxin taipoxin.
<b>Synonyms:</b>	Neuronal pentraxin-1, Nptx1, NP1
<b>Note:</b>	Molecular weight: 47085 Da



[View online »](#)

**Product images:**

Western blot analysis of Nptx1 Antibody (C-term) in 293 cell line lysates (35 ug/lane). Nptx1 (arrow) was detected using the purified Pab (1:60 dilution).



Formalin-fixed and paraffin-embedded human brain tissue reacted with Nptx1 Antibody (C-term), which was peroxidase-conjugated to the secondary antibody, followed by DAB staining. This data demonstrates the use of this antibody for immunohistochemistry; clinical relevance has not been evaluated.