

Product datasheet for **AP13988PU-N**

REA (PHB2) Rabbit Polyclonal Antibody

Product data:

Product Type:	Primary Antibodies
Applications:	WB
Recommended Dilution:	ELISA 1:1,000. Western blot 1:50 - 1:100.
Reactivity:	Human
Host:	Rabbit
Isotype:	Ig
Clonality:	Polyclonal
Immunogen:	This antibody is generated from rabbits immunized with a KLH conjugated synthetic peptide corresponding to amino acid residues surrounding Y248 of human PHB2.
Specificity:	This antibody detects PHB2.
Formulation:	PBS with 0.09% (W/V) sodium azide State: Aff - Purified State: Liquid Ig fraction
Concentration:	lot specific
Purification:	Protein A column, followed by peptide affinity purification.
Conjugation:	Unconjugated
Storage:	Store the antibody at 2 - 8 °C up to one month or (in aliquots) at -20 °C for longer. Avoid repeated freezing and thawing.
Stability:	Shelf life: one year from despatch.
Gene Name:	prohibitin 2
Database Link:	Entrez Gene 11331 Human Q99623
Background:	PHB2 acts as a mediator of transcriptional repression by nuclear hormone receptors via recruitment of histone deacetylases. It functions as an estrogen receptor (ER)-selective coregulator that potentiates the inhibitory activities of antiestrogens and represses the activity of estrogens. It competes with NCOA1 for modulation of ER transcriptional activity and is probably involved in regulating mitochondrial respiration activity and in aging.

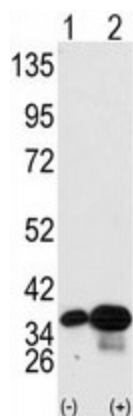


[View online »](#)

Synonyms: PHB2, BAP, REA, BAP37, D-prohibitin

Note: Molecular weight: 33165 Da predicted from amino acid sequence. Theoretical pI: 9.83.

Product images:



Western blot analysis of PHB2 (arrow) using PHB2 Antibody. 293 cell lysates (2 ug/lane) either nontransfected (Lane 1) or transiently transfected with the PHB2 gene (Lane 2) (Origene Technologies).