

Product datasheet for **AP13980PU-N**

HMX2 (C-term) Rabbit Polyclonal Antibody

Product data:

Product Type:	Primary Antibodies
Applications:	WB
Recommended Dilution:	ELISA 1:1,000. Western blot 1:100 - 1:250.
Reactivity:	Human
Host:	Rabbit
Isotype:	Ig
Clonality:	Polyclonal
Immunogen:	This antibody is generated from rabbits immunized with a KLH conjugated synthetic peptide selected from the C-terminal region of mouse HMX2.
Specificity:	This antibody detects HMX3 at C-term.
Formulation:	PBS with 0.09% (W/V) sodium azide State: Aff - Purified State: Liquid Ig fraction
Concentration:	lot specific
Purification:	Protein A column, followed by peptide affinity purification
Conjugation:	Unconjugated
Storage:	Store the antibody at 2 - 8 °C up to one month or (in aliquots) at -20 °C for longer. Avoid repeated freezing and thawing.
Stability:	Shelf life: one year from despatch.
Gene Name:	H6 family homeobox 2
Database Link:	Entrez Gene 3167 Human A2RU54
Background:	Homeobox genes represent a class of transcription factors that play key roles in the regulation of embryogenesis and development. Here we report the identification of a homeobox-containing gene family that is highly conserved at both the nucleotide and amino acid levels in a diverse number of species. These species encompass both vertebrate and invertebrate phylogenies, ranging from Homo sapiens to Drosophila melanogaster.

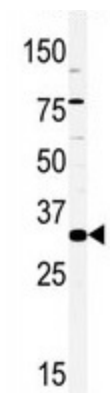


[View online »](#)

Synonyms: Homeobox protein HMX-2

Note: Molecular weight: 29503 Da

Product images:



Western blot analysis of anti-Hmx2 Antibody (C-term) in mouse liver tissue lysates (35 ug/lane). Hmx2 (arrow) was detected using the purified Pab (1:200 dilution).