

Product datasheet for **AP13974PU-N**

beta 2 Adrenergic Receptor (ADRB2) Rabbit Polyclonal Antibody

Product data:

| | |
|-----------------------|--|
| Product Type: | Primary Antibodies |
| Applications: | WB |
| Recommended Dilution: | ELISA 1:1,000. Western blot 1:50 - 1:100. |
| Reactivity: | Human |
| Host: | Rabbit |
| Isotype: | Ig |
| Clonality: | Polyclonal |
| Immunogen: | This antibody is generated from rabbits immunized with a KLH conjugated synthetic peptide corresponding to amino acid residues surrounding T384 of human BAR2. |
| Specificity: | This antibody detects ADRB2. |
| Formulation: | PBS with 0.09% (W/V) sodium azide State: Aff - Purified State: Liquid Ig fraction |
| Concentration: | lot specific |
| Purification: | Protein A column, followed by peptide affinity purification. |
| Conjugation: | Unconjugated |
| Storage: | Store the antibody at 2 - 8 °C up to one month or (in aliquots) at -20 °C for longer. Avoid repeated freezing and thawing. |
| Stability: | Shelf life: one year from despatch. |
| Gene Name: | adrenoceptor beta 2 |
| Database Link: | Entrez Gene 154 Human P07550 |



[View online »](#)

Background:

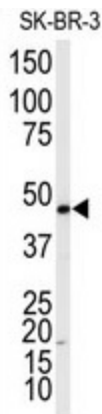
ADRB2, beta-2-adrenergic receptor which is a member of the G protein-coupled receptor superfamily. This receptor is directly associated with one of its ultimate effectors, the class C L-type calcium channel Ca(V)1.2. This receptor-channel complex also contains a G protein, an adenylyl cyclase, cAMP-dependent kinase, and the counterbalancing phosphatase, PP2A. The assembly of the signaling complex provides a mechanism that ensures specific and rapid signaling by this G protein-coupled receptor. This protein is intronless.

Synonyms:

ADRB2, ADRB2R, B2AR, Beta-2 adrenoreceptor

Note:

Molecular weight: 46557 Da

Product images:

Western blot analysis of anti-ADRB2 Antibody in SK-BR-3 cell line lysates (35 ug/lane). ADRB2 (arrow) was detected using the purified Pab.