

## Product datasheet for **AP13973PU-N**

### beta 2 Adrenergic Receptor (ADRB2) Rabbit Polyclonal Antibody

#### Product data:

Product Type:	Primary Antibodies
Applications:	WB
Recommended Dilution:	ELISA 1:1,000. Western blot 1:50 - 1:100.
Reactivity:	Human
Host:	Rabbit
Isotype:	Ig
Clonality:	Polyclonal
Immunogen:	This antibody is generated from rabbits immunized with a KLH conjugated synthetic peptide corresponding to amino acid residues surrounding S364 of human BAR2.
Specificity:	This antibody detects ADRB2.
Formulation:	PBS with 0.09% (W/V) sodium azide State: Aff - Purified State: Liquid Ig fraction
Concentration:	lot specific
Purification:	Protein A column, followed by peptide affinity purification.
Conjugation:	Unconjugated
Storage:	Store the antibody at 2 - 8 °C up to one month or (in aliquots) at -20 °C for longer. Avoid repeated freezing and thawing.
Stability:	Shelf life: one year from despatch.
Gene Name:	adrenoceptor beta 2
Database Link:	<a href="#">Entrez Gene 154 Human P07550</a>



[View online »](#)

**Background:**

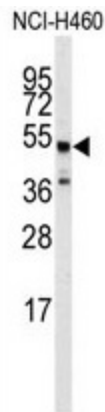
ADRB2, beta-2-adrenergic receptor which is a member of the G protein-coupled receptor superfamily. This receptor is directly associated with one of its ultimate effectors, the class C L-type calcium channel Ca(V)1.2. This receptor-channel complex also contains a G protein, an adenylyl cyclase, cAMP-dependent kinase, and the counterbalancing phosphatase, PP2A. The assembly of the signaling complex provides a mechanism that ensures specific and rapid signaling by this G protein-coupled receptor. This protein is intronless.

**Synonyms:**

ADRB2, ADRB2R, B2AR, Beta-2 adrenoreceptor

**Note:**

Molecular weight: 46557 Da

**Product images:**

Western blot analysis of anti-ADRB2 Antibody in NCI-H460 cell line lysates (35ug/lane). ADRB2 (arrow) was detected using the purified Pab.