

Product datasheet for **AP13959PU-N**

CDC25B Rabbit Polyclonal Antibody

Product data:

Product Type:	Primary Antibodies
Applications:	WB
Recommended Dilution:	ELISA 1:1,000. Western blot 1:50 - 1:100.
Reactivity:	Human
Host:	Rabbit
Isotype:	Ig
Clonality:	Polyclonal
Immunogen:	This antibody is generated from rabbits immunized with a KLH conjugated synthetic peptide corresponding to amino acid residues surrounding S353 of human CDC25B.
Specificity:	This antibody detects CDC25B.
Formulation:	PBS with 0.09% (W/V) sodium azide State: Aff - Purified State: Liquid Ig fraction
Concentration:	lot specific
Purification:	Protein A column, followed by peptide affinity purification.
Conjugation:	Unconjugated
Storage:	Store the antibody at 2 - 8 °C up to one month or (in aliquots) at -20 °C for longer. Avoid repeated freezing and thawing.
Stability:	Shelf life: one year from despatch.
Gene Name:	cell division cycle 25B
Database Link:	Entrez Gene 994 Human P30305



[View online »](#)

Background:

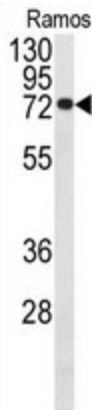
CDC25B is a member of the CDC25 family of phosphatases. CDC25B activates the cyclin dependent kinase CDC2 by removing two phosphate groups and it is required for entry into mitosis. CDC25B shuttles between the nucleus and the cytoplasm due to nuclear localization and nuclear export signals. The protein is nuclear in the M and G1 phases of the cell cycle and moves to the cytoplasm during S and G2. CDC25B has oncogenic properties, although its role in tumor formation has not been determined.

Synonyms:

CDC25HU2

Note:

Molecular weight: 64987 Da predicted from amino acid sequence. Multiple isoforms.
Theoretical pI: 6.00.

Product images:

Western blot analysis of anti-CDC25B Antibody in Ramos cell line lysates (35 ug/lane). CDC25B (arrow) was detected using the purified Pab.