

Product datasheet for **AP13928PU-N**

LKB1 (STK11) (N-term) Rabbit Polyclonal Antibody

Product data:

Product Type:	Primary Antibodies
Applications:	WB
Recommended Dilution:	ELISA 1:1,000. Western blot 1:250 - 1:500.
Reactivity:	Human
Host:	Rabbit
Isotype:	Ig
Clonality:	Polyclonal
Immunogen:	This antibody is generated from rabbits immunized with a KLH conjugated synthetic peptide selected from the N-terminal region of human STK11.
Specificity:	This antibody detects STK11 (LKB1) at N-term.
Formulation:	PBS with 0.09% (W/V) sodium azide State: Purified State: Liquid Ig fraction
Concentration:	lot specific
Purification:	Protein G column, eluted with high and low pH buffers and neutralized immediately, followed by dialysis against PBS.
Conjugation:	Unconjugated
Storage:	Store the antibody at 2 - 8 °C up to one month or (in aliquots) at -20 °C for longer. Avoid repeated freezing and thawing.
Stability:	Shelf life: one year from despatch.
Gene Name:	serine/threonine kinase 11
Database Link:	Entrez Gene 6794 Human Q15831
Background:	STK11, is a member of the serine/threonine kinase family, regulates cell polarity and functions as a tumor suppressor. Mutations in STK11 have been associated with Peutz-Jeghers syndrome, an autosomal dominant disorder characterized by the growth of polyps in the gastrointestinal tract, pigmented macules on the skin and mouth, and other neoplasms.

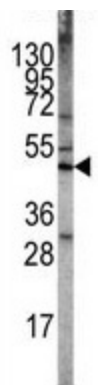


[View online »](#)

Synonyms: Serine/threonine-protein kinase 11, LKB1, PJS, NY-REN-19

Note: Molecular weight: 48636 Da

Product images:



Western blot analysis of STK11 Antibody (N-term) in Ramos cell line lysates. STK11 was detected using the purified Pab.