

Product datasheet for **AP13908PU-N**

p38 (MAPK14) Rabbit Polyclonal Antibody

Product data:

Product Type:	Primary Antibodies
Applications:	WB
Recommended Dilution:	ELISA 1:1,000. Western blot 1:50 - 1:100.
Reactivity:	Human, Mouse
Host:	Rabbit
Isotype:	Ig
Clonality:	Polyclonal
Immunogen:	This antibody is generated from rabbits immunized with a KLH conjugated synthetic peptide corresponding to amino acid residues surrounding T180 of human MAPK14.
Specificity:	This antibody detects MAPK14.
Formulation:	State: Aff - Purified State: Purified polyclonal antibody supplied in PBS with 0.09% (W/V) sodium azide. This antibody is purified through a protein A column, followed by peptide affinity purification.
Concentration:	lot specific
Conjugation:	Unconjugated
Storage:	Store the antibody at 2 - 8 °C up to one month or (in aliquots) at -20 °C for longer. Avoid repeated freezing and thawing.
Stability:	Shelf life: one year from despatch.
Gene Name:	mitogen-activated protein kinase 14
Database Link:	Entrez Gene 1432 Human Q16539



[View online »](#)

Background:

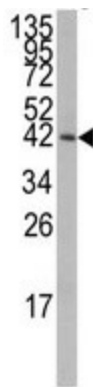
MAPK14 is a member of the MAP kinase family. MAP kinases act as an integration point for multiple biochemical signals, and are involved in a wide variety of cellular processes such as proliferation, differentiation, transcription regulation and development. This kinase is activated by various environmental stresses and proinflammatory cytokines. The activation requires its phosphorylation by MAP kinase kinases (MKKs), or its autophosphorylation triggered by the interaction of MAP3K7IP1/TAB1 protein with this kinase. The substrates of this kinase include transcription regulator ATF2, MEF2C, and MAX, cell cycle regulator CDC25B, and tumor suppressor p53, which suggest the roles of this kinase in stress related transcription and cell cycle regulation, as well as in genotoxic stress response.

Synonyms:

Mitogen-activated protein kinase 14, p38 alpha, MXI2, SAPK2A, CSBP, CSBP1, CSBP2, CSPB1

Note:

Molecular weight: 41293 Da

Product images:

Western blot analysis of anti-MAPK14 Antibody (AP13908PU-N) in mouse lung tissue lysates (35 ug/lane). MAPK14 (arrow) was detected using the purified Pab.