

Product datasheet for **AP13894PU-N**

PRAK (MAPKAPK5) Rabbit Polyclonal Antibody

Product data:

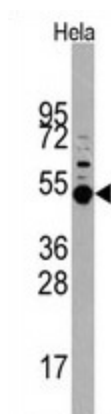
Product Type:	Primary Antibodies
Applications:	WB
Recommended Dilution:	ELISA 1:1,000. Western blott 1:50 - 1:100.
Reactivity:	Human
Host:	Rabbit
Isotype:	Ig
Clonality:	Polyclonal
Immunogen:	This antibody is generated from rabbits immunized with a KLH conjugated synthetic peptide corresponding to amino acid residues surrounding T182 of human MAPKAPK5.
Specificity:	This antibody detects PRAK (MAPKAPK5).
Formulation:	PBS with 0.09% (W/V) sodium azide State: Aff - Purified State: Liquid Ig fraction
Concentration:	lot specific
Purification:	Protein A column, followed by peptide affinity purification.
Conjugation:	Unconjugated
Storage:	Store the antibody at 2 - 8 °C up to one month or (in aliquots) at -20 °C for longer. Avoid repeated freezing and thawing.
Stability:	Shelf life: one year from despatch.
Gene Name:	mitogen-activated protein kinase-activated protein kinase 5
Database Link:	Entrez Gene 8550 Human Q8IW41
Background:	MAPKAPK5 is a member of the serine/threonine kinase family. In response to cellular stress and proinflammatory cytokines, this kinase is activated through its phosphorylation by MAP kinases including MAPK1/ERK, MAPK14/p38-alpha, and MAPK11/p38-beta. In vitro, this kinase phosphorylates heat shock protein HSP27 at its physiologically relevant sites.
Synonyms:	MAPK-activated protein kinase 5, MAPKAP kinase 5, MAPKAPK5, PRAK



[View online »](#)

Note: Molecular weight: 54220 Da

Product images:



Western blot analysis of Mrified Pab (1:60 dilution).