

## Product datasheet for **AP13887PU-N**

### **CAMK2D (C-term) Rabbit Polyclonal Antibody**

#### Product data:

Product Type:	Primary Antibodies
Applications:	IHC, WB
Recommended Dilution:	<b>ELISA:</b> 1/1,000. <b>Western blot:</b> 1/100 -1/500. <b>Immunohistochemistry:</b> 1/50-1/100.
Reactivity:	Human, Monkey
Host:	Rabbit
Isotype:	Ig
Clonality:	Polyclonal
Immunogen:	KLH conjugated synthetic peptide between 448-478 amino acids from the C-terminal region of human CAMK2D (CAMK2 delta).
Specificity:	This antibody detects CAMK2D at C-term.
Formulation:	PBS with 0.09% (W/V) sodium azide State: Purified State: Liquid purified Ig fraction
Concentration:	lot specific
Purification:	Protein G column, eluted with high and low pH buffers and neutralized immediately, followed by dialysis against PBS.
Conjugation:	Unconjugated
Storage:	Store undiluted at 2-8°C for one month or (in aliquots) at -20°C for longer. Avoid repeated freezing and thawing.
Stability:	Shelf life: one year from despatch.
Gene Name:	calcium/calmodulin dependent protein kinase II delta
Database Link:	<a href="#">Entrez Gene 817 Human Q13557</a>



[View online »](#)

**Background:**

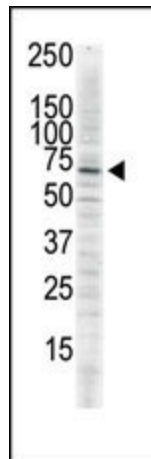
CaM-kinase II (CAMK2) is a prominent Ser/Thr protein kinase in the central nervous system that may function in long-term potentiation and neurotransmitter release. Likely autophosphorylation of Thr-286 allows the kinase to switch from a calmodulin-dependent to a calmodulin-independent state. CAMK2 is composed of four different chains: alpha, beta, gamma, and delta. The different isoforms assemble into homo- or heteromultimeric holoenzymes composed of 8 to 12 subunits. Expression of CAMK2 delta is significantly increased in patients suffering from dilated cardiomyopathy.

**Synonyms:**

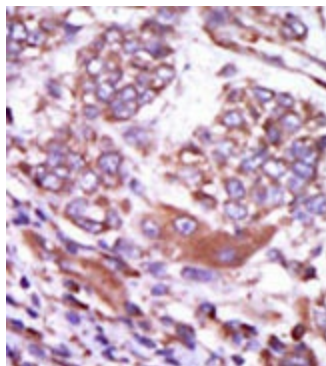
CAMKD, CaM-kinase II delta chain, CaM kinase II subunit delta, CaMK-II subunit delta

**Note:**

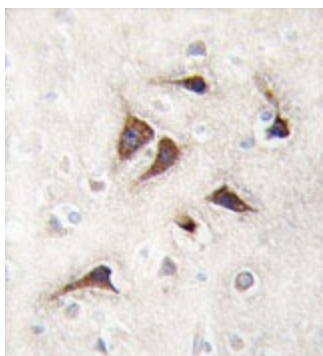
Molecular weight: 56297 Da

**Product images:**


The anti-CAMK2delta C-term Pab is used in Western blot to detect CAMK2 delta in serum-starved HeLa cell lysate.



Formalin-fixed and paraffin-embedded human cancer tissue (hepatocarcinoma) reacted with the primary antibody, which was peroxidase-conjugated to the secondary antibody, followed by AEC staining. This data demonstrates the use of this antibody for immunohistochemistry; clinical relevance has not been evaluated.



Formalin-fixed and paraffin-embedded human brain tissue reacted with CAMK2 delta Antibody (C-term), which was peroxidase-conjugated to the secondary antibody, followed by DAB staining. This data demonstrates the use of this antibody for immunohistochemistry; clinical relevance has not been evaluated.