

Product datasheet for **AP13886PU-N**

CAMK2G (C-term) Rabbit Polyclonal Antibody

Product data:

Product Type:	Primary Antibodies
Applications:	IHC, WB
Recommended Dilution:	ELISA: 1/1,000. Western blot: 1/1000. Immunohistochemistry: 1/50-1/100.
Reactivity:	Human, Mouse, Primate, Rat
Host:	Rabbit
Isotype:	Ig
Clonality:	Polyclonal
Immunogen:	KLH conjugated synthetic peptide between 309-338 amino acids from the C-terminal region of Human CAMK2G (CAMK2 gamma).
Specificity:	This antibody detects CAMK2G at C-term.
Formulation:	PBS State: Purified State: Liquid purified Ig fraction Preservative: 0.09% (W/V) Sodium Azide
Concentration:	lot specific
Purification:	Saturated Ammonium Sulfate (SAS) precipitation followed by dialysis against PBS
Conjugation:	Unconjugated
Storage:	Store undiluted at 2-8°C for one month or (in aliquots) at -20°C for longer. Avoid repeated freezing and thawing.
Stability:	Shelf life: one year from despatch.
Predicted Protein Size:	62609 Da
Gene Name:	calcium/calmodulin dependent protein kinase II gamma
Database Link:	Entrez Gene 12325 Mouse Entrez Gene 171140 Rat Entrez Gene 818 Human Q13555



[View online »](#)

Background:

CaM-kinase II (CAMK2) is a prominent Ser/Thr protein kinase in the central nervous system that may function in long-term potentiation and neurotransmitter release. Likely autophosphorylation of Thr-286 allows the kinase to switch from a calmodulin-dependent to a calmodulin-independent state. CAMK2 is composed of four different chains: alpha, beta, gamma, and delta. The different isoforms assemble into homo- or heteromultimeric holoenzymes composed of 8 to 12 subunits.

Synonyms:

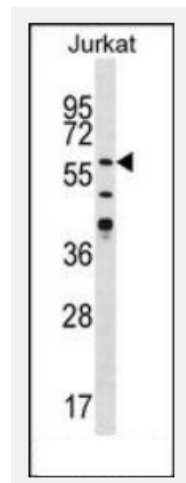
CaM-kinase II gamma chain, CaM kinase II subunit gamma, CaMK-II subunit gamma

Protein Families:

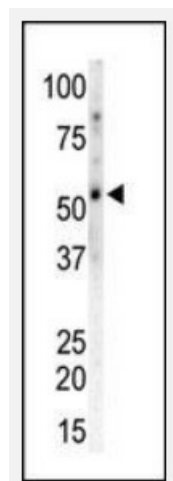
Druggable Genome, Protein Kinase

Protein Pathways:

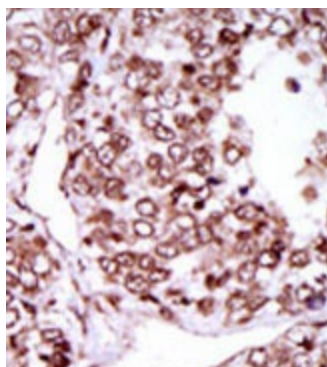
Calcium signaling pathway, ErbB signaling pathway, Glioma, GnRH signaling pathway, Long-term potentiation, Melanogenesis, Neurotrophin signaling pathway, Olfactory transduction, Oocyte meiosis, Wnt signaling pathway

Product images:

Western blot analysis of CAMK2G / CAMKG Antibody in K562 cell line lysates (35 ug/lane). CAMK2G (arrow) was detected using the purified Pab.



Western blot of CAMK2G / CAMKG Antibody to detect CAMK2 gamma in Mouse heart tissue lysate.



Formalin-fixed and paraffin-embedded human cancer tissue (hepatocarcinoma) reacted with the primary antibody, which was peroxidase-conjugated to the secondary antibody, followed by AEC staining. This data demonstrates the use of this antibody for immunohistochemistry; clinical relevance has not been evaluated.