

Product datasheet for **AP13883PU-N**

CaMKI (CAMK1) (C-term) Rabbit Polyclonal Antibody

Product data:

Product Type:	Primary Antibodies
Applications:	IHC, WB
Recommended Dilution:	ELISA 1:1,000. Western blot 1:100 - 1:500. Immunohistochemistry 1:50 - 1:100.
Reactivity:	Human, Mouse, Primate, Rat
Host:	Rabbit
Isotype:	Ig
Clonality:	Polyclonal
Immunogen:	This antibody is generated from rabbits immunized with a KLH conjugated synthetic peptide selected from the C-terminal region of human CAMK1.
Specificity:	This antibody detects CAMK1 at C-term.
Formulation:	PBS with 0.09% (W/V) sodium azide State: Purified State: Liquid Ig fraction
Concentration:	lot specific
Purification:	Protein G column, eluted with high and low pH buffers and neutralized immediately, followed by dialysis against PBS.
Conjugation:	Unconjugated
Storage:	Store the antibody at 2 - 8 °C up to one month or (in aliquots) at -20 °C for longer. Avoid repeated freezing and thawing.
Stability:	Shelf life: one year from despatch.
Gene Name:	calcium/calmodulin dependent protein kinase I
Database Link:	Entrez Gene 8536 Human Q14012



[View online »](#)

Background:

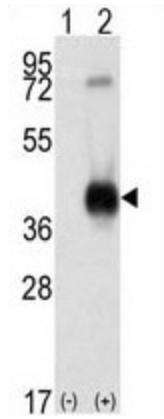
Calcium/calmodulin-dependent protein kinase I is expressed in many tissues and is a component of a calmodulin-dependent protein kinase cascade. Calcium/calmodulin directly activates calcium/calmodulin-dependent protein kinase I by binding to the enzyme and indirectly promotes the phosphorylation and synergistic activation of the enzyme by calcium/calmodulin-dependent protein kinase I kinase.

Synonyms:

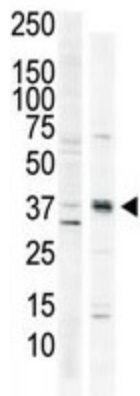
CaM kinase I, CaM kinase I alpha, CaM-KI, CaMKI-alpha

Note:

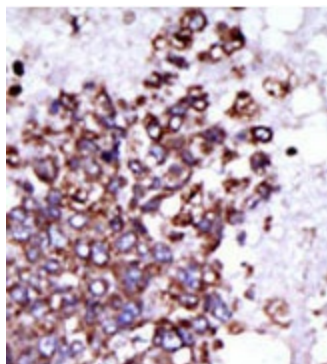
Molecular weight: 41337 Da

Product images:


Western blot analysis of CAMK1 (arrow) using rabbit polyclonal CAMK1 Antibody (C-term). 293 cell lysates (2 ug/lane) either nontransfected (Lane 1) or transiently transfected with the CAMK1 gene (Lane 2) (Origene Technologies).



The anti-CAMK1 C-term Pab is used in Western blot to detect CAMK1 in HeLa cell lysate (lane 1) and primate brain tissue lysate (lane 2).



Formalin-fixed and paraffin-embedded human cancer tissue (hepatocarcinoma) reacted with the primary antibody, which was peroxidase-conjugated to the secondary antibody, followed by DAB staining. This data demonstrates the use of this antibody for immunohistochemistry; clinical relevance has not been evaluated.