

## Product datasheet for **AP13877PU-N**

### AMPK alpha 1 (PRKAA1) (C-term) Rabbit Polyclonal Antibody

#### Product data:

|                       |  |
|-----------------------|--|
| Product Type:         | Primary Antibodies   |
| Applications:         | WB   |
| Recommended Dilution: | ELISA 1:1,000.<br>Western blot 1:100 - 1:500.  |
| Reactivity:           | Human, Mouse   |
| Host:                 | Rabbit   |
| Isotype:              | Ig   |
| Clonality:            | Polyclonal   |
| Immunogen:            | This antibody is generated from rabbits immunized with a KLH conjugated synthetic peptide selected from the C-terminal region of human AMPK alpha 1. |
| Specificity:          | This antibody detects AMPK alpha 1 at C-term.  |
| Formulation:          | PBS with 0.09% (W/V) sodium azide<br>State: Purified<br>State: Liquid Ig fraction  |
| Concentration:        | lot specific   |
| Purification:         | Protein G column, eluted with high and low pH buffers and neutralized immediately, followed by dialysis against PBS.                                 |
| Conjugation:          | Unconjugated   |
| Storage:              | Store the antibody at 2 - 8 °C up to one month or (in aliquots) at -20 °C for longer. Avoid repeated freezing and thawing.                           |
| Stability:            | Shelf life: one year from despatch.  |
| Gene Name:            | protein kinase AMP-activated catalytic subunit alpha 1   |
| Database Link:        | <a href="#">Entrez Gene 5562 Human Q13131</a>  |



[View online »](#)

**Background:**

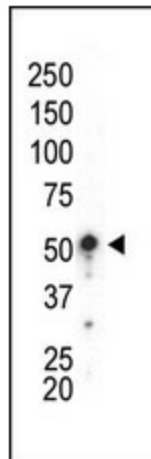
AMPK is responsible for the regulation of fatty acid synthesis by phosphorylation of acetyl-CoA carboxylase. It also regulates cholesterol synthesis via phosphorylation and inactivation of hormone-sensitive lipase and hydroxymethylglutaryl-CoA reductase. It appears to act as a metabolic stress-sensing protein kinase switching off biosynthetic pathways when cellular ATP levels are depleted and when 5'-AMP rises in response to fuel limitation and/or hypoxia. AMPK alpha1, a member of the Ser/Thr protein kinase family, is a catalytic subunit of AMPK.

**Synonyms:**

AMPK1, AMPK alpha-1 chain

**Note:**

Molecular weight: 62793 Da.

**Product images:**

Western blot analysis of anti-AMPK alpha 1 C-term Pab in mouse liver lysate. AMPK alpha 1 (arrow) was detected using purified Pab. Secondary HRP-anti-rabbit was used for signal visualization with chemiluminescence.